



SCHOOL PERFORMANCE FACT SHEETS 2015-2016

DIAGNOSTIC CARDIAC SONOGRAPHY BS DEGREE PROGRAM
DIAGNOSTIC MEDICAL SONOGRAPHY AOS DEGREE
CARDIOVASCULAR SONOGRAPHY AOS DEGREE PROGRAM
MAGNETIC RESONANCE IMAGING AOS DEGREE PROGRAM
MAGNETIC RESONANCE IMAGING-LONG DIPLOMA PROGRAM
MAGNETIC RESONANCE IMAGING-SHORT DIPLOMA PROGRAM
PEDIATRIC CARDIAC ULTRASOUND & CONGENITAL HEART DISEASE DIPLOMA PROGRAM
VOCATIONAL NURSING DIPLOMA PROGRAM

WEST COAST ULTRASOUND INSTITUTE

MAIN CAMPUS

291 SOUTH LA CIENEGA BOULEVARD, SUITE 500
BEVERLY HILLS, CALIFORNIA 90211

ONTARIO BRANCH CAMPUS

3700 EAST INLAND EMPIRE BOULEVARD, SUITE 235
ONTARIO, CALIFORNIA 91764

JULY 2015

THIS PAGE IS INTENTIONALLY BLANK

WEST COAST ULTRASOUND INSTITUTE
 BEVERLY HILLS & ONTARIO CAMPUSES
 SCHOOL PERFORMANCE FACT SHEET
 2015-16 ACADEMIC YEAR



**DIAGNOSTIC CARDIAC SONOGRAPHY (36 MONTH PROGRAM)
 BACHELOR OF SCIENCE DEGREE PROGRAM**

(NEW PROGRAM. NO DATA AVAILABLE FOR THE REPORTING PERIOD)

The following charts represent the completion, placement and salary information for our students from the two (2) most recent completed academic years. We are required by the Bureau for Private Postsecondary Education to disclose this information to you prior to accepting your enrollment into West Coast Ultrasound Institute. Please review the information carefully for your chosen program of study. Upon satisfactory examination of your program data, and prior to signing your enrollment agreement, you must initial your understanding and acceptance

Calendar Year	# OF STUDENTS WHO BEGAN PROGRAM ¹	STUDENTS AVAILABLE FOR GRADUATION ²	GRADUATES ³	COMPLETION RATE ⁴	150% GRADUATES ⁵	150% COMPLETION RATE ⁶	STUDENT'S INITIALS BELOW:
2013	0	0	0	0	0	0	
2014	0	0	0	0	0	0	

Calendar Year	# OF GRADUATES ⁷	GRADUATES AVAILABLE FOR EMPLOYMENT ⁸	GRADUATES EMPLOYED IN THE FIELD ⁹	PLACEMENT RATE ¹⁰	GRADUATES EMPLOYED LESS THAN 32 HOURS PER WEEK	GRADUATES EMPLOYED MORE THAN 32 HOURS PER WEEK	STUDENT'S INITIALS BELOW:
2013	0	0	0	0	0	0	
2014	0	0	0	0	0	0	

ANNUAL SALARY AND WAGE REPORTED FOR GRADUATES EMPLOYED IN THE FIELD

Calendar Year	GRADUATES AVAILABLE FOR EMPLOYMENT ⁸	GRADUATES EMPLOYED IN THE FIELD ⁹	BELOW \$30,000	\$30,000 TO 34,999	\$35,000 TO 39,999	\$40,000 TO 44,999	\$45,000 TO 49,999	\$50,000 TO 54,999	ABOVE \$55,000	STUDENTS NOT REPORTING SALARY	STUDENT'S INITIALS BELOW
2013	0	0	0	0	0	0	0	0	0	0	
2014	0	0	0	0	0	0	0	0	0	0	

3 YEAR COHORT DEFAULT RATE PUBLISHED BY USDE:	% OF ENROLLED STUDENTS RECEIVING FEDERAL STUDENT LOANS:
11.5%	88%

This fact sheet is filed with the Bureau for Private Postsecondary Education. Regardless of any information you may have relating to completion rates, placement rates, starting rates, starting salaries, or license exam passage rates, this fact sheet contains the information as calculated pursuant to state Law.

Information regarding a list of employment positions that have been determined to be within the field of training for this program can be obtained along with a list of objective sources supporting salaries claims for this program, by visiting the Career Services Department.

Any questions a student may have regarding this fact sheet that have not been satisfactory answered by the institution may be directed to the Bureau for Private Postsecondary Education at 2535 Capital Oaks Drive, Suite 400, t Sacramento, Ca 95833, www.bppe.ca.gov, (916) 431-6959 telephone, (916) 263-1897 fax.

I certify that I have received the School Performance Fact Sheet, and information regarding completions rates, and salary or wage information included in the School Performance Fact Sheet

 Student Signature

 Date

 Print Name

SCHOOL PERFORMANCE FACT SHEET DEFINITIONS:

Calendar Year	# OF STUDENTS WHO BEGAN PROGRAM 1	STUDENTS AVAILABLE FOR GRADUATION 2	GRADUATES 3	COMPLETION RATE 4	150% GRADUATES RATE 5	150% COMPLETION RATE 6	STUDENT'S INITIALS BELOW:
---------------	--	--	--------------------	--------------------------	------------------------------	-------------------------------	---------------------------

1“NUMBER OF STUDENTS WHO BEGAN PROGRAM” IS THE NUMBER OF STUDENTS WHO BEGAN WHO ARE SCHEDULED TO COMPLETE THE PROGRAM WITHIN THE REPORTING CALENDAR YEAR.

2 “STUDENTS AVAILABLE FOR GRADUATION” IS THE NUMBER OF STUDENTS WHO BEGAN THE PROGRAM MINUS THE NUMBER OF “STUDENTS UNAVAILABLE FOR GRADUATION”, WHICH MEANS STUDENTS WHO HAVE DIED, BEEN INCARCERATED, OR CALLED TO ACTIVE MILITARY DUTY.

3“GRADUATES” IS THE NUMBER OF STUDENTS WHO COMPLETED THE PROGRAM WITHIN 100% OF THE PUBLISHED LENGTH.

4“COMPLETION RATE” IS THE NUMBER OF GRADUATES DIVIDED BY THE NUMBER OF “STUDENTS AVAILABLE FOR GRADUATION”.

5“150% GRADUATES RATE” IS THE NUMBER OF STUDENTS WHO COMPLETED THE PROGRAM WITHIN 101%-150% OF THE PUBLISHED PROGRAM RATE.

6“150% COMPLETION RATE” IS THE PERCENTAGE OF STUDENTS WHO COMPLETED THE PROGRAM IN THE REPORTED CALENDAR YEAR WITHIN 101% -150% OF THE PUBLISHED LENGTH.

Calendar Year	# OF GRADUATES 7	GRADUATES AVAILABLE FOR EMPLOYMENT 8	GRADUATES EMPLOYED IN THE FIELD 9	PLACEMENT RATE 10	GRADUATES EMPLOYED LESS THAN 32 HOURS PER WEEK	GRADUATES EMPLOYED MORE THAN 32 HOURS PER WEEK	STUDENT'S INITIALS BELOW:
---------------	-------------------------	---	--	--------------------------	--	--	---------------------------

7“# OF GRADUATES” IS THE NUMBER OF STUDENTS WHO COMPLETED THE PROGRAM WITHIN 100% OF THE PUBLISHED LENGTH.

8“GRADUATES AVAILABLE FOR EMPLOYMENT” MEANS THE NUMBER OF GRADUATES MINUS THE NUMBER OF GRADUATES UNAVAILABLE FOR EMPLOYMENT. GRADUATES UNAVAILABLE FOR EMPLOYMENT MEANS GRADUATES WHO HAVE DIED, BECOME INCARCERATED, ARE CALLED TO ACTIVE MILITARY DUTY, OR ARE INTERNATIONAL STUDENTS WHO DO NOT HAVE A VISA ALLOWING EMPLOYMENT.

9“GRADUATES EMPLOYED IN THE FIELD” ARE GRADUATES WHO REPORT THAT THEY ARE EMPLOYED WITHIN SIX MONTHS OF GRADUATION IN A POSITION REQUIRING THE SKILLS THEY OBTAINED THROUGH THE EDUCATION PROVIDED BY THE SCHOOL.

10“PLACEMENT RATE” IS THE NUMBER OF EMPLOYED GRADUATES DIVIDED BY THE “GRADUATES AVAILABLE FOR EMPLOYMENT”.

Annual Salary and Wage Reported for Graduates Employed in the Field	BELOW \$30,000	\$30,000 TO 34,999	\$35,000 TO 39,999	\$40,000 TO 44,999	\$45,000 TO 49,999	\$50,000 TO 54,999	\$55,000 TO 59,999	ABOVE \$60,000
---	----------------	--------------------	--------------------	--------------------	--------------------	--------------------	--------------------	----------------

“Annual Salaries of the Placement Rate Cohorts” ARE THE ANNUAL SALARIES IN INCREMENTS OF \$5000.00 REPORTED BY THE GRADUATES WHO ARE EMPLOYED WITHIN SIX MONTHS OF GRADUATION IN A POSITION REQUIRING THE SKILLS THEY OBTAINED THROUGH THE EDUCATION PROVIDED BY THE SCHOOL

WEST COAST ULTRASOUND INSTITUTE
 BEVERLY HILLS CAMPUS
 SCHOOL PERFORMANCE FACT SHEET
 2015-16 ACADEMIC YEAR



DIAGNOSTIC MEDICAL SONOGRAPHY (18 MONTH PROGRAM)
ASSOCIATE OF OCCUPATIONAL SCIENCE DEGREE PROGRAM

The following charts represent the completion, placement and salary information for our students from the two (2) most recent completed academic years. We are required by the Bureau for Private Postsecondary Education to disclose this information to you prior to accepting your enrollment into West Coast Ultrasound Institute. Please review the information carefully for your chosen program of study. Upon satisfactory examination of your program data, and prior to signing your enrollment agreement, you must initial your understanding and acceptance

Calendar Year	# OF STUDENTS WHO BEGAN PROGRAM ¹	STUDENTS AVAILABLE FOR GRADUATION ²	GRADUATES ³	COMPLETION RATE ⁴	150% GRADUATES ⁵	150% COMPLETION RATE ⁶	STUDENT'S INITIALS BELOW:
2013	76	76	17	22%	32	42%	
2014	73	73	18	25%	29	40%	

Calendar Year	# OF GRADUATES ⁷	GRADUATES AVAILABLE FOR EMPLOYMENT ⁸	GRADUATES EMPLOYED IN THE FIELD ⁹	PLACEMENT RATE ¹⁰	GRADUATES EMPLOYED LESS THAN 32 HOURS PER WEEK	GRADUATES EMPLOYED MORE THAN 32 HOURS PER WEEK	STUDENT'S INITIALS BELOW:
2013	17	17	13	76%	3	10	
2014	18	18	14	78%	5	9	

ANNUAL SALARY AND WAGE REPORTED FOR GRADUATES EMPLOYED IN THE FIELD

Calendar Year	GRADUATES AVAILABLE FOR EMPLOYMENT ⁸	GRADUATES EMPLOYED IN THE FIELD ⁹	BELOW \$30,000	\$30,000 TO 34,999	\$35,000 TO 39,999	\$40,000 TO 44,999	\$45,000 TO 49,999	\$50,000 TO 54,999	ABOVE \$55,000	STUDENTS NOT REPORTING SALARY	STUDENT'S INITIALS BELOW
2013	17	13	2	1	1	3	1	0	5	0	
2014	18	14	4	0	0	2	0	5	3	0	

3 YEAR COHORT DEFAULT RATE PUBLISHED BY USDE:	% OF ENROLLED STUDENTS RECEIVING FEDERAL STUDENT LOANS:
8.9%	82%

This fact sheet is filed with the Bureau for Private Postsecondary Education. Regardless of any information you may have relating to completion rates, placement rates, starting rates, starting salaries, or license exam passage rates, this fact sheet contains the information as calculated pursuant to state Law.

Information regarding a list of employment positions that have been determined to be within the field of training for this program can be obtained along with a list of objective sources supporting salaries claims for this program, by visiting the Career Services Department.

Any questions a student may have regarding this fact sheet that have not been satisfactory answered by the institution may be directed to the Bureau for Private Postsecondary Education at 2535 Capital Oaks Drive, Suite 400, t Sacramento, Ca 95833, www.bppe.ca.gov, (916) 431-6959 telephone, (916) 263-1897 fax.

I certify that I have received the School Performance Fact Sheet, and information regarding completions rates, and salary or wage information included in the School Performance Fact Sheet

 Student Signature

 Date

 Print Name

SCHOOL PERFORMANCE FACT SHEET DEFINITIONS:

Calendar Year	# OF STUDENTS WHO BEGAN PROGRAM 1	STUDENTS AVAILABLE FOR GRADUATION 2	GRADUATES 3	COMPLETION RATE 4	150% GRADUATES RATE 5	150% COMPLETION RATE 6	STUDENT'S INITIALS BELOW:
---------------	--	--	--------------------	--------------------------	------------------------------	-------------------------------	---------------------------

1“NUMBER OF STUDENTS WHO BEGAN PROGRAM” IS THE NUMBER OF STUDENTS WHO BEGAN WHO ARE SCHEDULED TO COMPLETE THE PROGRAM WITHIN THE REPORTING CALENDAR YEAR.

2 “STUDENTS AVAILABLE FOR GRADUATION” IS THE NUMBER OF STUDENTS WHO BEGAN THE PROGRAM MINUS THE NUMBER OF “STUDENTS UNAVAILABLE FOR GRADUATION”, WHICH MEANS STUDENTS WHO HAVE DIED, BEEN INCARCERATED, OR CALLED TO ACTIVE MILITARY DUTY.

3“GRADUATES” IS THE NUMBER OF STUDENTS WHO COMPLETED THE PROGRAM WITHIN 100% OF THE PUBLISHED LENGTH.

4“COMPLETION RATE” IS THE NUMBER OF GRADUATES DIVIDED BY THE NUMBER OF “STUDENTS AVAILABLE FOR GRADUATION”.

5“150% GRADUATES RATE” IS THE NUMBER OF STUDENTS WHO COMPLETED THE PROGRAM WITHIN 101%-150% OF THE PUBLISHED PROGRAM RATE.

6“150% COMPLETION RATE” IS THE PERCENTAGE OF STUDENTS WHO COMPLETED THE PROGRAM IN THE REPORTED CALENDAR YEAR WITHIN 101% -150% OF THE PUBLISHED LENGTH.

Calendar Year	# OF GRADUATES 7	GRADUATES AVAILABLE FOR EMPLOYMENT 8	GRADUATES EMPLOYED IN THE FIELD 9	PLACEMENT RATE 10	GRADUATES EMPLOYED LESS THAN 32 HOURS PER WEEK	GRADUATES EMPLOYED MORE THAN 32 HOURS PER WEEK	STUDENT'S INITIALS BELOW:
---------------	-------------------------	---	--	--------------------------	--	--	---------------------------

7“# OF GRADUATES” IS THE NUMBER OF STUDENTS WHO COMPLETED THE PROGRAM WITHIN 100% OF THE PUBLISHED LENGTH.

8“GRADUATES AVAILABLE FOR EMPLOYMENT” MEANS THE NUMBER OF GRADUATES MINUS THE NUMBER OF GRADUATES UNAVAILABLE FOR EMPLOYMENT. GRADUATES UNAVAILABLE FOR EMPLOYMENT MEANS GRADUATES WHO HAVE DIED, BECOME INCARCERATED, ARE CALLED TO ACTIVE MILITARY DUTY, OR ARE INTERNATIONAL STUDENTS WHO DO NOT HAVE A VISA ALLOWING EMPLOYMENT.

9“GRADUATES EMPLOYED IN THE FIELD” ARE GRADUATES WHO REPORT THAT THEY ARE EMPLOYED WITHIN SIX MONTHS OF GRADUATION IN A POSITION REQUIRING THE SKILLS THEY OBTAINED THROUGH THE EDUCATION PROVIDED BY THE SCHOOL.

10“PLACEMENT RATE” IS THE NUMBER OF EMPLOYED GRADUATES DIVIDED BY THE “GRADUATES AVAILABLE FOR EMPLOYMENT”.

Annual Salary and Wage Reported for Graduates Employed in the Field	BELOW \$30,000	\$30,000 TO 34,999	\$35,000 TO 39,999	\$40,000 TO 44,999	\$45,000 TO 49,999	\$50,000 TO 54,999	\$55,000 TO 59,999	ABOVE \$60,000
---	----------------	--------------------	--------------------	--------------------	--------------------	--------------------	--------------------	----------------

“Annual Salaries of the Placement Rate Cohorts” ARE THE ANNUAL SALARIES IN INCREMENTS OF \$5000.00 REPORTED BY THE GRADUATES WHO ARE EMPLOYED WITHIN SIX MONTHS OF GRADUATION IN A POSITION REQUIRING THE SKILLS THEY OBTAINED THROUGH THE EDUCATION PROVIDED BY THE SCHOOL

WEST COAST ULTRASOUND INSTITUTE
 BEVERLY HILLS CAMPUS
 SCHOOL PERFORMANCE FACT SHEET
 2015-16 ACADEMIC YEAR



CARDIOVASCULAR SONOGRAPHY (18 MONTH PROGRAM)
ASSOCIATE OF OCCUPATIONAL SCIENCE DEGREE PROGRAM

The following charts represent the completion, placement and salary information for our students from the two (2) most recent completed academic years. We are required by the Bureau for Private Postsecondary Education to disclose this information to you prior to accepting your enrollment into West Coast Ultrasound Institute. Please review the information carefully for your chosen program of study. Upon satisfactory examination of your program data, and prior to signing your enrollment agreement, you must initial your understanding and acceptance

Calendar Year	# OF STUDENTS WHO BEGAN PROGRAM ¹	STUDENTS AVAILABLE FOR GRADUATION ²	GRADUATES ³	COMPLETION RATE ⁴	150% GRADUATES ⁵	150% COMPLETION RATE ⁶	STUDENT'S INITIALS BELOW:
2013	60	60	19	32%	6	10%	
2014	53	53	19	36%	13	25%	

Calendar Year	# OF GRADUATES ⁷	GRADUATES AVAILABLE FOR EMPLOYMENT ⁸	GRADUATES EMPLOYED IN THE FIELD ⁹	PLACEMENT RATE ¹⁰	GRADUATES EMPLOYED LESS THAN 32 HOURS PER WEEK	GRADUATES EMPLOYED MORE THAN 32 HOURS PER WEEK	STUDENT'S INITIALS BELOW:
2013	19	16	14	88%	6	8	
2014	19	19	12	63%	5	7	

ANNUAL SALARY AND WAGE REPORTED FOR GRADUATES EMPLOYED IN THE FIELD

Year	GRADUATES AVAILABLE FOR EMPLOYMENT ⁸	GRADUATES EMPLOYED IN THE FIELD ⁹	BELOW \$30,000	\$30,000 TO 34,999	\$35,000 TO 39,999	\$40,000 TO 44,999	\$45,000 TO 49,999	\$50,000 TO 54,999	ABOVE \$55,000	STUDENTS NOT REPORTING SALARY	STUDENT'S INITIALS BELOW
2013	16	14	5	3	1	0	0	2	3	0	
2014	19	12	4	1	2	0	0	2	3	0	

3 YEAR COHORT DEFAULT RATE PUBLISHED BY USDE:	% OF ENROLLED STUDENTS RECEIVING FEDERAL STUDENT LOANS:
8.9%	82%

This fact sheet is filed with the Bureau for Private Postsecondary Education. Regardless of any information you may have relating to completion rates, placement rates, starting rates, starting salaries, or license exam passage rates, this fact sheet contains the information as calculated pursuant to state Law.

Information regarding a list of employment positions that have been determined to be within the field of training for this program can be obtained along with a list of objective sources supporting salaries claims for this program, by visiting the Career Services Department.

Any questions a student may have regarding this fact sheet that have not been satisfactory answered by the institution may be directed to the Bureau for Private Postsecondary Education at 2535 Capital Oaks Drive, Suite 400, t Sacramento, Ca 95833, www.bppe.ca.gov, (916) 431-6959 telephone, (916) 263-1897 fax.

I certify that I have received the School Performance Fact Sheet, and information regarding completions rates, and salary or wage information included in the School Performance Fact Sheet

 Student Signature

 Date

 Print Name

SCHOOL PERFORMANCE FACT SHEET DEFINITIONS:

Calendar Year	# OF STUDENTS WHO BEGAN PROGRAM 1	STUDENTS AVAILABLE FOR GRADUATION 2	GRADUATES 3	COMPLETION RATE 4	150% GRADUATES RATE 5	150% COMPLETION RATE 6	STUDENT'S INITIALS BELOW:
---------------	--	--	--------------------	--------------------------	------------------------------	-------------------------------	---------------------------

1“NUMBER OF STUDENTS WHO BEGAN PROGRAM” IS THE NUMBER OF STUDENTS WHO BEGAN WHO ARE SCHEDULED TO COMPLETE THE PROGRAM WITHIN THE REPORTING CALENDAR YEAR.

2 “STUDENTS AVAILABLE FOR GRADUATION” IS THE NUMBER OF STUDENTS WHO BEGAN THE PROGRAM MINUS THE NUMBER OF “STUDENTS UNAVAILABLE FOR GRADUATION”, WHICH MEANS STUDENTS WHO HAVE DIED, BEEN INCARCERATED, OR CALLED TO ACTIVE MILITARY DUTY.

3“GRADUATES” IS THE NUMBER OF STUDENTS WHO COMPLETED THE PROGRAM WITHIN 100% OF THE PUBLISHED LENGTH.

4“COMPLETION RATE” IS THE NUMBER OF GRADUATES DIVIDED BY THE NUMBER OF “STUDENTS AVAILABLE FOR GRADUATION”.

5“150% GRADUATES RATE” IS THE NUMBER OF STUDENTS WHO COMPLETED THE PROGRAM WITHIN 101%-150% OF THE PUBLISHED PROGRAM RATE.

6“150% COMPLETION RATE” IS THE PERCENTAGE OF STUDENTS WHO COMPLETED THE PROGRAM IN THE REPORTED CALENDAR YEAR WITHIN 101% -150% OF THE PUBLISHED LENGTH.

Calendar Year	# OF GRADUATES 7	GRADUATES AVAILABLE FOR EMPLOYMENT 8	GRADUATES EMPLOYED IN THE FIELD 9	PLACEMENT RATE 10	GRADUATES EMPLOYED LESS THAN 32 HOURS PER WEEK	GRADUATES EMPLOYED MORE THAN 32 HOURS PER WEEK	STUDENT'S INITIALS BELOW:
---------------	-------------------------	---	--	--------------------------	--	--	---------------------------

7“# OF GRADUATES” IS THE NUMBER OF STUDENTS WHO COMPLETED THE PROGRAM WITHIN 100% OF THE PUBLISHED LENGTH.

8“GRADUATES AVAILABLE FOR EMPLOYMENT” MEANS THE NUMBER OF GRADUATES MINUS THE NUMBER OF GRADUATES UNAVAILABLE FOR EMPLOYMENT. GRADUATES UNAVAILABLE FOR EMPLOYMENT MEANS GRADUATES WHO HAVE DIED, BECOME INCARCERATED, ARE CALLED TO ACTIVE MILITARY DUTY, OR ARE INTERNATIONAL STUDENTS WHO DO NOT HAVE A VISA ALLOWING EMPLOYMENT.

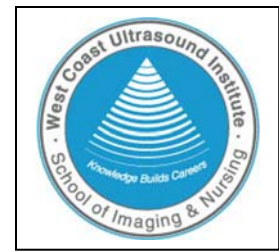
9“GRADUATES EMPLOYED IN THE FIELD” ARE GRADUATES WHO REPORT THAT THEY ARE EMPLOYED WITHIN SIX MONTHS OF GRADUATION IN A POSITION REQUIRING THE SKILLS THEY OBTAINED THROUGH THE EDUCATION PROVIDED BY THE SCHOOL.

10“PLACEMENT RATE” IS THE NUMBER OF EMPLOYED GRADUATES DIVIDED BY THE “GRADUATES AVAILABLE FOR EMPLOYMENT”.

Annual Salary and Wage Reported for Graduates Employed in the Field	BELOW \$30,000	\$30,000 TO 34,999	\$35,000 TO 39,999	\$40,000 TO 44,999	\$45,000 TO 49,999	\$50,000 TO 54,999	\$55,000 TO 59,999	ABOVE \$60,000
---	----------------	--------------------	--------------------	--------------------	--------------------	--------------------	--------------------	----------------

“Annual Salaries of the Placement Rate Cohorts” ARE THE ANNUAL SALARIES IN INCREMENTS OF \$5000.00 REPORTED BY THE GRADUATES WHO ARE EMPLOYED WITHIN SIX MONTHS OF GRADUATION IN A POSITION REQUIRING THE SKILLS THEY OBTAINED THROUGH THE EDUCATION PROVIDED BY THE SCHOOL

WEST COAST ULTRASOUND INSTITUTE
 BEVERLY HILLS CAMPUS
 SCHOOL PERFORMANCE FACT SHEET
 2015-16 ACADEMIC YEAR



MAGNETIC RESONANCE IMAGING (18 MONTH PROGRAM)
ASSOCIATE OF OCCUPATIONAL SCIENCE DEGREE PROGRAM

The following charts represent the completion, placement and salary information for our students from the two (2) most recent completed academic years. We are required by the Bureau for Private Postsecondary Education to disclose this information to you prior to accepting your enrollment into West Coast Ultrasound Institute. Please review the information carefully for your chosen program of study. Upon satisfactory examination of your program data, and prior to signing your enrollment agreement, you must initial your understanding and acceptance

Calendar Year	# OF STUDENTS WHO BEGAN PROGRAM ¹	STUDENTS AVAILABLE FOR GRADUATION ²	GRADUATES ³	COMPLETION RATE ⁴	150% GRADUATES ⁵	150% COMPLETION RATE ⁶	STUDENT'S INITIALS BELOW:
2013	12	12	6	50%	3	25%	
2014	28	28	14	50%	9	32%	

Calendar Year	# OF GRADUATES ⁷	GRADUATES AVAILABLE FOR EMPLOYMENT ⁸	GRADUATES EMPLOYED IN THE FIELD ⁹	PLACEMENT RATE ¹⁰	GRADUATES EMPLOYED LESS THAN 32 HOURS PER WEEK	GRADUATES EMPLOYED MORE THAN 32 HOURS PER WEEK	STUDENT'S INITIALS BELOW:
2013	6	4	3	75%	1	2	
2014	14	14	9	64%	5	4	

ANNUAL SALARY AND WAGE REPORTED FOR GRADUATES EMPLOYED IN THE FIELD											
Year	GRADUATES AVAILABLE FOR EMPLOYMENT ⁸	GRADUATES EMPLOYED IN THE FIELD ⁹	BELOW \$30,000	\$30,000 TO 34,999	\$35,000 TO 39,999	\$40,000 TO 44,999	\$45,000 TO 49,999	\$50,000 TO 54,999	ABOVE \$55,000	STUDENTS NOT REPORTING SALARY	STUDENT'S INITIALS BELOW
2013	4	3	0	1	0	1	0	1	0	0	
2014	14	9	3	4	0	0	0	0	2	0	
3 YEAR COHORT DEFAULT RATE PUBLISHED BY USDE:						% OF ENROLLED STUDENTS RECEIVING FEDERAL STUDENT LOANS:					
8.9%						82%					

This fact sheet is filed with the Bureau for Private Postsecondary Education. Regardless of any information you may have relating to completion rates, placement rates, starting rates, starting salaries, or license exam passage rates, this fact sheet contains the information as calculated pursuant to state Law.

Information regarding a list of employment positions that have been determined to be within the field of training for this program can be obtained along with a list of objective sources supporting salaries claims for this program, by visiting the Career Services Department.

Any questions a student may have regarding this fact sheet that have not been satisfactory answered by the institution may be directed to the Bureau for Private Postsecondary Education at 2535 Capital Oaks Drive, Suite 400, t Sacramento, Ca 95833, www.bppe.ca.gov, (916) 431-6959 telephone, (916) 263-1897 fax.

I certify that I have received the School Performance Fact Sheet, and information regarding completions rates, and salary or wage information included in the School Performance Fact Sheet

 Student Signature

 Date

 Print Name

SCHOOL PERFORMANCE FACT SHEET DEFINITIONS:

Calendar Year	# OF STUDENTS WHO BEGAN PROGRAM 1	STUDENTS AVAILABLE FOR GRADUATION 2	GRADUATES 3	COMPLETION RATE 4	150% GRADUATES RATE 5	150% COMPLETION RATE 6	STUDENT'S INITIALS BELOW:
---------------	--	--	--------------------	--------------------------	------------------------------	-------------------------------	---------------------------

1“NUMBER OF STUDENTS WHO BEGAN PROGRAM” IS THE NUMBER OF STUDENTS WHO BEGAN WHO ARE SCHEDULED TO COMPLETE THE PROGRAM WITHIN THE REPORTING CALENDAR YEAR.

2 “STUDENTS AVAILABLE FOR GRADUATION” IS THE NUMBER OF STUDENTS WHO BEGAN THE PROGRAM MINUS THE NUMBER OF “STUDENTS UNAVAILABLE FOR GRADUATION”, WHICH MEANS STUDENTS WHO HAVE DIED, BEEN INCARCERATED, OR CALLED TO ACTIVE MILITARY DUTY.

3“GRADUATES” IS THE NUMBER OF STUDENTS WHO COMPLETED THE PROGRAM WITHIN 100% OF THE PUBLISHED LENGTH.

4“COMPLETION RATE” IS THE NUMBER OF GRADUATES DIVIDED BY THE NUMBER OF “STUDENTS AVAILABLE FOR GRADUATION”.

5“150% GRADUATES RATE” IS THE NUMBER OF STUDENTS WHO COMPLETED THE PROGRAM WITHIN 101%-150% OF THE PUBLISHED PROGRAM RATE.

6“150% COMPLETION RATE” IS THE PERCENTAGE OF STUDENTS WHO COMPLETED THE PROGRAM IN THE REPORTED CALENDAR YEAR WITHIN 101% -150% OF THE PUBLISHED LENGTH.

Calendar Year	# OF GRADUATES 7	GRADUATES AVAILABLE FOR EMPLOYMENT 8	GRADUATES EMPLOYED IN THE FIELD 9	PLACEMENT RATE 10	GRADUATES EMPLOYED LESS THAN 32 HOURS PER WEEK	GRADUATES EMPLOYED MORE THAN 32 HOURS PER WEEK	STUDENT'S INITIALS BELOW:
---------------	-------------------------	---	--	--------------------------	--	--	---------------------------

7“# OF GRADUATES” IS THE NUMBER OF STUDENTS WHO COMPLETED THE PROGRAM WITHIN 100% OF THE PUBLISHED LENGTH.

8“GRADUATES AVAILABLE FOR EMPLOYMENT” MEANS THE NUMBER OF GRADUATES MINUS THE NUMBER OF GRADUATES UNAVAILABLE FOR EMPLOYMENT. GRADUATES UNAVAILABLE FOR EMPLOYMENT MEANS GRADUATES WHO HAVE DIED, BECOME INCARCERATED, ARE CALLED TO ACTIVE MILITARY DUTY, OR ARE INTERNATIONAL STUDENTS WHO DO NOT HAVE A VISA ALLOWING EMPLOYMENT.

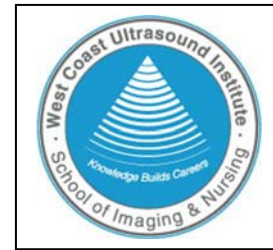
9“GRADUATES EMPLOYED IN THE FIELD” ARE GRADUATES WHO REPORT THAT THEY ARE EMPLOYED WITHIN SIX MONTHS OF GRADUATION IN A POSITION REQUIRING THE SKILLS THEY OBTAINED THROUGH THE EDUCATION PROVIDED BY THE SCHOOL.

10“PLACEMENT RATE” IS THE NUMBER OF EMPLOYED GRADUATES DIVIDED BY THE “GRADUATES AVAILABLE FOR EMPLOYMENT”.

Annual Salary and Wage Reported for Graduates Employed in the Field	BELOW \$30,000	\$30,000 TO 34,999	\$35,000 TO 39,999	\$40,000 TO 44,999	\$45,000 TO 49,999	\$50,000 TO 54,999	\$55,000 TO 59,999	ABOVE \$60,000
---	----------------	--------------------	--------------------	--------------------	--------------------	--------------------	--------------------	----------------

“Annual Salaries of the Placement Rate Cohorts” ARE THE ANNUAL SALARIES IN INCREMENTS OF \$5000.00 REPORTED BY THE GRADUATES WHO ARE EMPLOYED WITHIN SIX MONTHS OF GRADUATION IN A POSITION REQUIRING THE SKILLS THEY OBTAINED THROUGH THE EDUCATION PROVIDED BY THE SCHOOL

WEST COAST ULTRASOUND INSTITUTE
 BEVERLY HILLS CAMPUS
 SCHOOL PERFORMANCE FACT SHEET
 2015-16 ACADEMIC YEAR



**MAGNETIC RESONANCE IMAGING SHORT
 NINE MONTH DIPLOMA PROGRAM**

The following charts represent the completion, placement and salary information for our students from the two (2) most recent completed academic years. We are required by the Bureau for Private Postsecondary Education to disclose this information to you prior to accepting your enrollment into West Coast Ultrasound Institute. Please review the information carefully for your chosen program of study. Upon satisfactory examination of your program data, and prior to signing your enrollment agreement, you must initial your understanding and acceptance

Calendar Year	# OF STUDENTS WHO BEGAN PROGRAM ¹	STUDENTS AVAILABLE FOR GRADUATION ²	GRADUATES ³	COMPLETION RATE ⁴	150% GRADUATES ⁵	150% COMPLETION RATE ⁶	STUDENT'S INITIALS BELOW:
2013	3	3	2	67%	0	0	
2014	2	2	2	100%	0	0	

Calendar Year	# OF GRADUATES ⁷	GRADUATES AVAILABLE FOR EMPLOYMENT ⁸	GRADUATES EMPLOYED IN THE FIELD ⁹	PLACEMENT RATE ¹⁰	GRADUATES EMPLOYED LESS THAN 32 HOURS PER WEEK	GRADUATES EMPLOYED MORE THAN 32 HOURS PER WEEK	STUDENT'S INITIALS BELOW:
2013	2	1	1	100%	0	1	
2014	2	2	1	50%	0	1	

ANNUAL SALARY AND WAGE REPORTED FOR GRADUATES EMPLOYED IN THE FIELD

Year	GRADUATES AVAILABLE FOR EMPLOYMENT ⁸	GRADUATES EMPLOYED IN THE FIELD ⁹	BELOW \$30,000	\$30,000 TO 34,999	\$35,000 TO 39,999	\$40,000 TO 44,999	\$45,000 TO 49,999	\$50,000 TO 54,999	ABOVE \$55,000	STUDENTS NOT REPORTING SALARY	STUDENT'S INITIALS BELOW
2013	1	1	0	0	0	0	0	0	1	0	
2014	1	1	0	0	0	0	0	0	1	0	

3 YEAR COHORT DEFAULT RATE PUBLISHED BY USDE:	% OF ENROLLED STUDENTS RECEIVING FEDERAL STUDENT LOANS:
8.9%	82%

This fact sheet is filed with the Bureau for Private Postsecondary Education. Regardless of any information you may have relating to completion rates, placement rates, starting rates, starting salaries, or license exam passage rates, this fact sheet contains the information as calculated pursuant to state Law.

Information regarding a list of employment positions that have been determined to be within the field of training for this program can be obtained along with a list of objective sources supporting salaries claims for this program, by visiting the Career Services Department.

Any questions a student may have regarding this fact sheet that have not been satisfactory answered by the institution may be directed to the Bureau for Private Postsecondary Education at 2535 Capital Oaks Drive, Suite 400, t Sacramento, Ca 95833, www.bppe.ca.gov, (916) 431-6959 telephone, (916) 263-1897 fax.

I certify that I have received the School Performance Fact Sheet, and information regarding completions rates, and salary or wage information included in the School Performance Fact Sheet

 Student Signature

 Date

 Print Name

SCHOOL PERFORMANCE FACT SHEET DEFINITIONS:

Calendar Year	# OF STUDENTS WHO BEGAN PROGRAM 1	STUDENTS AVAILABLE FOR GRADUATION 2	GRADUATES 3	COMPLETION RATE 4	150% GRADUATES RATE 5	150% COMPLETION RATE 6	STUDENT'S INITIALS BELOW:
---------------	--	--	--------------------	--------------------------	------------------------------	-------------------------------	---------------------------

1“NUMBER OF STUDENTS WHO BEGAN PROGRAM” IS THE NUMBER OF STUDENTS WHO BEGAN WHO ARE SCHEDULED TO COMPLETE THE PROGRAM WITHIN THE REPORTING CALENDAR YEAR.

2 “STUDENTS AVAILABLE FOR GRADUATION” IS THE NUMBER OF STUDENTS WHO BEGAN THE PROGRAM MINUS THE NUMBER OF “STUDENTS UNAVAILABLE FOR GRADUATION”, WHICH MEANS STUDENTS WHO HAVE DIED, BEEN INCARCERATED, OR CALLED TO ACTIVE MILITARY DUTY.

3“GRADUATES” IS THE NUMBER OF STUDENTS WHO COMPLETED THE PROGRAM WITHIN 100% OF THE PUBLISHED LENGTH.

4“COMPLETION RATE” IS THE NUMBER OF GRADUATES DIVIDED BY THE NUMBER OF “STUDENTS AVAILABLE FOR GRADUATION”.

5“150% GRADUATES RATE” IS THE NUMBER OF STUDENTS WHO COMPLETED THE PROGRAM WITHIN 101%-150% OF THE PUBLISHED PROGRAM RATE.

6“150% COMPLETION RATE” IS THE PERCENTAGE OF STUDENTS WHO COMPLETED THE PROGRAM IN THE REPORTED CALENDAR YEAR WITHIN 101% -150% OF THE PUBLISHED LENGTH.

Calendar Year	# OF GRADUATES 7	GRADUATES AVAILABLE FOR EMPLOYMENT 8	GRADUATES EMPLOYED IN THE FIELD 9	PLACEMENT RATE 10	GRADUATES EMPLOYED LESS THAN 32 HOURS PER WEEK	GRADUATES EMPLOYED MORE THAN 32 HOURS PER WEEK	STUDENT'S INITIALS BELOW:
---------------	-------------------------	---	--	--------------------------	--	--	---------------------------

7“# OF GRADUATES” IS THE NUMBER OF STUDENTS WHO COMPLETED THE PROGRAM WITHIN 100% OF THE PUBLISHED LENGTH.

8“GRADUATES AVAILABLE FOR EMPLOYMENT” MEANS THE NUMBER OF GRADUATES MINUS THE NUMBER OF GRADUATES UNAVAILABLE FOR EMPLOYMENT. GRADUATES UNAVAILABLE FOR EMPLOYMENT MEANS GRADUATES WHO HAVE DIED, BECOME INCARCERATED, ARE CALLED TO ACTIVE MILITARY DUTY, OR ARE INTERNATIONAL STUDENTS WHO DO NOT HAVE A VISA ALLOWING EMPLOYMENT.

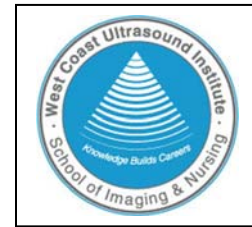
9“GRADUATES EMPLOYED IN THE FIELD” ARE GRADUATES WHO REPORT THAT THEY ARE EMPLOYED WITHIN SIX MONTHS OF GRADUATION IN A POSITION REQUIRING THE SKILLS THEY OBTAINED THROUGH THE EDUCATION PROVIDED BY THE SCHOOL.

10“PLACEMENT RATE” IS THE NUMBER OF EMPLOYED GRADUATES DIVIDED BY THE “GRADUATES AVAILABLE FOR EMPLOYMENT”.

Annual Salary and Wage Reported for Graduates Employed in the Field	BELOW \$30,000	\$30,000 TO 34,999	\$35,000 TO 39,999	\$40,000 TO 44,999	\$45,000 TO 49,999	\$50,000 TO 54,999	\$55,000 TO 59,999	ABOVE \$60,000
---	----------------	--------------------	--------------------	--------------------	--------------------	--------------------	--------------------	----------------

“Annual Salaries of the Placement Rate Cohorts” ARE THE ANNUAL SALARIES IN INCREMENTS OF \$5000.00 REPORTED BY THE GRADUATES WHO ARE EMPLOYED WITHIN SIX MONTHS OF GRADUATION IN A POSITION REQUIRING THE SKILLS THEY OBTAINED THROUGH THE EDUCATION PROVIDED BY THE SCHOOL

WEST COAST ULTRASOUND INSTITUTE
 BEVERLY HILLS CAMPUS
 SCHOOL PERFORMANCE FACT SHEET
 2015-16 ACADEMIC YEAR



**MAGNETIC RESONANCE IMAGING LONG
 FIFTEEN MONTH DIPLOMA PROGRAM**

The following charts represent the completion, placement and salary information for our students from the two (2) most recent completed academic years. We are required by the Bureau for Private Postsecondary Education to disclose this information to you prior to accepting your enrollment into West Coast Ultrasound Institute. Please review the information carefully for your chosen program of study. Upon satisfactory examination of your program data, and prior to signing your enrollment agreement, you must initial your understanding and acceptance

Calendar Year	# OF STUDENTS WHO BEGAN PROGRAM ¹	STUDENTS AVAILABLE FOR GRADUATION ²	GRADUATES ³	COMPLETION RATE ⁴	150% GRADUATES ⁵	150% COMPLETION RATE ⁶	STUDENT'S INITIALS BELOW:
2013	1	1	1	100%	0	0	
2014	1	1	1	100%	0	0	

Calendar Year	# OF GRADUATES ⁷	GRADUATES AVAILABLE FOR EMPLOYMENT ⁸	GRADUATES EMPLOYED IN THE FIELD ⁹	PLACEMENT RATE ¹⁰	GRADUATES EMPLOYED LESS THAN 32 HOURS PER WEEK	GRADUATES EMPLOYED MORE THAN 32 HOURS PER WEEK	STUDENT'S INITIALS BELOW:
2013	1	1	1	100%	0	1	
2014	1	1	1	100%	0	1	

Year	GRADUATES AVAILABLE FOR EMPLOYMENT ⁸	GRADUATES EMPLOYED IN THE FIELD ⁹	ANNUAL SALARY AND WAGE REPORTED FOR GRADUATES EMPLOYED IN THE FIELD							STUDENTS NOT REPORTING SALARY	STUDENT'S INITIALS BELOW
			BELOW \$30,000	\$30,000 TO 34,999	\$35,000 TO 39,999	\$40,000 TO 44,999	\$45,000 TO 49,999	\$50,000 TO 54,999	ABOVE \$55,000		
2013	1	1	0	0	0	0	0	1	0	0	
2014	1	1	0	0	0	0	0	0	1	0	

3 YEAR COHORT DEFAULT RATE PUBLISHED BY USDE:	% OF ENROLLED STUDENTS RECEIVING FEDERAL STUDENT LOANS:
8.9%	82%

This fact sheet is filed with the Bureau for Private Postsecondary Education. Regardless of any information you may have relating to completion rates, placement rates, starting rates, starting salaries, or license exam passage rates, this fact sheet contains the information as calculated pursuant to state Law.

Information regarding a list of employment positions that have been determined to be within the field of training for this program can be obtained along with a list of objective sources supporting salaries claims for this program, by visiting the Career Services Department.

Any questions a student may have regarding this fact sheet that have not been satisfactory answered by the institution may be directed to the Bureau for Private Postsecondary Education at 2535 Capital Oaks Drive, Suite 400, t Sacramento, Ca 95833, www.bppe.ca.gov, (916) 431-6959 telephone, (916) 263-1897 fax.

I certify that I have received the School Performance Fact Sheet, and information regarding completions rates, and salary or wage information included in the School Performance Fact Sheet

 Student Signature

 Date

 Print Name

SCHOOL PERFORMANCE FACT SHEET DEFINITIONS:

Calendar Year	# OF STUDENTS WHO BEGAN PROGRAM 1	STUDENTS AVAILABLE FOR GRADUATION 2	GRADUATES 3	COMPLETION RATE 4	150% GRADUATES RATE 5	150% COMPLETION RATE 6	STUDENT'S INITIALS BELOW:
---------------	--	--	--------------------	--------------------------	------------------------------	-------------------------------	---------------------------

1“NUMBER OF STUDENTS WHO BEGAN PROGRAM” IS THE NUMBER OF STUDENTS WHO BEGAN WHO ARE SCHEDULED TO COMPLETE THE PROGRAM WITHIN THE REPORTING CALENDAR YEAR.

2 “STUDENTS AVAILABLE FOR GRADUATION” IS THE NUMBER OF STUDENTS WHO BEGAN THE PROGRAM MINUS THE NUMBER OF “STUDENTS UNAVAILABLE FOR GRADUATION”, WHICH MEANS STUDENTS WHO HAVE DIED, BEEN INCARCERATED, OR CALLED TO ACTIVE MILITARY DUTY.

3“GRADUATES” IS THE NUMBER OF STUDENTS WHO COMPLETED THE PROGRAM WITHIN 100% OF THE PUBLISHED LENGTH.

4“COMPLETION RATE” IS THE NUMBER OF GRADUATES DIVIDED BY THE NUMBER OF “STUDENTS AVAILABLE FOR GRADUATION”.

5“150% GRADUATES RATE” IS THE NUMBER OF STUDENTS WHO COMPLETED THE PROGRAM WITHIN 101%-150% OF THE PUBLISHED PROGRAM RATE.

6“150% COMPLETION RATE” IS THE PERCENTAGE OF STUDENTS WHO COMPLETED THE PROGRAM IN THE REPORTED CALENDAR YEAR WITHIN 101% -150% OF THE PUBLISHED LENGTH.

Calendar Year	# OF GRADUATES 7	GRADUATES AVAILABLE FOR EMPLOYMENT 8	GRADUATES EMPLOYED IN THE FIELD 9	PLACEMENT RATE 10	GRADUATES EMPLOYED LESS THAN 32 HOURS PER WEEK	GRADUATES EMPLOYED MORE THAN 32 HOURS PER WEEK	STUDENT'S INITIALS BELOW:
---------------	-------------------------	---	--	--------------------------	--	--	---------------------------

7“# OF GRADUATES” IS THE NUMBER OF STUDENTS WHO COMPLETED THE PROGRAM WITHIN 100% OF THE PUBLISHED LENGTH.

8“GRADUATES AVAILABLE FOR EMPLOYMENT” MEANS THE NUMBER OF GRADUATES MINUS THE NUMBER OF GRADUATES UNAVAILABLE FOR EMPLOYMENT. GRADUATES UNAVAILABLE FOR EMPLOYMENT MEANS GRADUATES WHO HAVE DIED, BECOME INCARCERATED, ARE CALLED TO ACTIVE MILITARY DUTY, OR ARE INTERNATIONAL STUDENTS WHO DO NOT HAVE A VISA ALLOWING EMPLOYMENT.

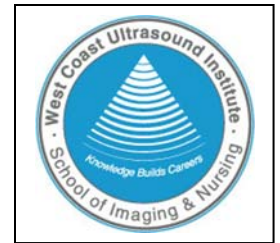
9“GRADUATES EMPLOYED IN THE FIELD” ARE GRADUATES WHO REPORT THAT THEY ARE EMPLOYED WITHIN SIX MONTHS OF GRADUATION IN A POSITION REQUIRING THE SKILLS THEY OBTAINED THROUGH THE EDUCATION PROVIDED BY THE SCHOOL.

10“PLACEMENT RATE” IS THE NUMBER OF EMPLOYED GRADUATES DIVIDED BY THE “GRADUATES AVAILABLE FOR EMPLOYMENT”.

Annual Salary and Wage Reported for Graduates Employed in the Field	BELOW \$30,000	\$30,000 TO 34,999	\$35,000 TO 39,999	\$40,000 TO 44,999	\$45,000 TO 49,999	\$50,000 TO 54,999	\$55,000 TO 59,999	ABOVE \$60,000
---	----------------	--------------------	--------------------	--------------------	--------------------	--------------------	--------------------	----------------

“Annual Salaries of the Placement Rate Cohorts” ARE THE ANNUAL SALARIES IN INCREMENTS OF \$5000.00 REPORTED BY THE GRADUATES WHO ARE EMPLOYED WITHIN SIX MONTHS OF GRADUATION IN A POSITION REQUIRING THE SKILLS THEY OBTAINED THROUGH THE EDUCATION PROVIDED BY THE SCHOOL

WEST COAST ULTRASOUND INSTITUTE
 BEVERLY HILLS CAMPUS
 SCHOOL PERFORMANCE FACT SHEET
 2015-16 ACADEMIC YEAR



**PEDIATRIC CARDIAC ULTRASOUND AND CONGENITAL HEART DISEASE
 NINE MONTH DIPLOMA PROGRAM**

The following charts represent the completion, placement and salary information for our students from the two (2) most recent completed academic years. We are required by the Bureau for Private Postsecondary Education to disclose this information to you prior to accepting your enrollment into West Coast Ultrasound Institute. Please review the information carefully for your chosen program of study. Upon satisfactory examination of your program data, and prior to signing your enrollment agreement, you must initial your understanding and acceptance

Calendar Year	# OF STUDENTS WHO BEGAN PROGRAM ¹	STUDENTS AVAILABLE FOR GRADUATION ²	GRADUATES ³	COMPLETION RATE ⁴	150% GRADUATES ⁵	150% COMPLETION RATE ⁶	STUDENT'S INITIALS BELOW:
2013	6	6	6	100%	0	0	
2014	4	4	3	75%	0	0	

Calendar Year	# OF GRADUATES ⁷	GRADUATES AVAILABLE FOR EMPLOYMENT ⁸	GRADUATES EMPLOYED IN THE FIELD ⁹	PLACEMENT RATE ¹⁰	GRADUATES EMPLOYED LESS THAN 32 HOURS PER WEEK	GRADUATES EMPLOYED MORE THAN 32 HOURS PER WEEK	STUDENT'S INITIALS BELOW:
2013	6	4	4	100%	0	4	
2014	3	3	3	100%	0	3	

ANNUAL SALARY AND WAGE REPORTED FOR GRADUATES EMPLOYED IN THE FIELD											
Year	GRADUATES AVAILABLE FOR EMPLOYMENT ⁸	GRADUATES EMPLOYED IN THE FIELD ⁹	BELOW \$30,000	\$30,000 TO 34,999	\$35,000 TO 39,999	\$40,000 TO 44,999	\$45,000 TO 49,999	\$50,000 TO 54,999	ABOVE \$55,000	STUDENTS NOT REPORTING SALARY	STUDENT'S INITIALS BELOW
2013	0	0	0	1	0	0	0	1	2	0	
2014	3	3	0	0	0	0	0	0	3	0	

3 YEAR COHORT DEFAULT RATE PUBLISHED BY USDE:	% OF ENROLLED STUDENTS RECEIVING FEDERAL STUDENT LOANS:
8.9%	82%

This fact sheet is filed with the Bureau for Private Postsecondary Education. Regardless of any information you may have relating to completion rates, placement rates, starting rates, starting salaries, or license exam passage rates, this fact sheet contains the information as calculated pursuant to state Law.

Information regarding a list of employment positions that have been determined to be within the field of training for this program can be obtained along with a list of objective sources supporting salaries claims for this program, by visiting the Career Services Department.

Any questions a student may have regarding this fact sheet that have not been satisfactory answered by the institution may be directed to the Bureau for Private Postsecondary Education at 2535 Capital Oaks Drive, Suite 400, t Sacramento, Ca 95833, www.bppe.ca.gov, (916) 431-6959 telephone, (916) 263-1897 fax.

I certify that I have received the School Performance Fact Sheet, and information regarding completions rates, and salary or wage information included in the School Performance Fact Sheet

 Student Signature

 Date

 Print Name

SCHOOL PERFORMANCE FACT SHEET DEFINITIONS:

Calendar Year	# OF STUDENTS WHO BEGAN PROGRAM 1	STUDENTS AVAILABLE FOR GRADUATION 2	GRADUATES 3	COMPLETION RATE 4	150% GRADUATES RATE 5	150% COMPLETION RATE 6	STUDENT'S INITIALS BELOW:
---------------	--	--	--------------------	--------------------------	------------------------------	-------------------------------	---------------------------

1“NUMBER OF STUDENTS WHO BEGAN PROGRAM” IS THE NUMBER OF STUDENTS WHO BEGAN WHO ARE SCHEDULED TO COMPLETE THE PROGRAM WITHIN THE REPORTING CALENDAR YEAR.

2 “STUDENTS AVAILABLE FOR GRADUATION” IS THE NUMBER OF STUDENTS WHO BEGAN THE PROGRAM MINUS THE NUMBER OF “STUDENTS UNAVAILABLE FOR GRADUATION”, WHICH MEANS STUDENTS WHO HAVE DIED, BEEN INCARCERATED, OR CALLED TO ACTIVE MILITARY DUTY.

3“GRADUATES” IS THE NUMBER OF STUDENTS WHO COMPLETED THE PROGRAM WITHIN 100% OF THE PUBLISHED LENGTH.

4“COMPLETION RATE” IS THE NUMBER OF GRADUATES DIVIDED BY THE NUMBER OF “STUDENTS AVAILABLE FOR GRADUATION”.

5“150% GRADUATES RATE” IS THE NUMBER OF STUDENTS WHO COMPLETED THE PROGRAM WITHIN 101%-150% OF THE PUBLISHED PROGRAM RATE.

6“150% COMPLETION RATE” IS THE PERCENTAGE OF STUDENTS WHO COMPLETED THE PROGRAM IN THE REPORTED CALENDAR YEAR WITHIN 101% -150% OF THE PUBLISHED LENGTH.

Calendar Year	# OF GRADUATES 7	GRADUATES AVAILABLE FOR EMPLOYMENT 8	GRADUATES EMPLOYED IN THE FIELD 9	PLACEMENT RATE 10	GRADUATES EMPLOYED LESS THAN 32 HOURS PER WEEK	GRADUATES EMPLOYED MORE THAN 32 HOURS PER WEEK	STUDENT'S INITIALS BELOW:
---------------	-------------------------	---	--	--------------------------	--	--	---------------------------

7“# OF GRADUATES” IS THE NUMBER OF STUDENTS WHO COMPLETED THE PROGRAM WITHIN 100% OF THE PUBLISHED LENGTH.

8“GRADUATES AVAILABLE FOR EMPLOYMENT” MEANS THE NUMBER OF GRADUATES MINUS THE NUMBER OF GRADUATES UNAVAILABLE FOR EMPLOYMENT. GRADUATES UNAVAILABLE FOR EMPLOYMENT MEANS GRADUATES WHO HAVE DIED, BECOME INCARCERATED, ARE CALLED TO ACTIVE MILITARY DUTY, OR ARE INTERNATIONAL STUDENTS WHO DO NOT HAVE A VISA ALLOWING EMPLOYMENT.

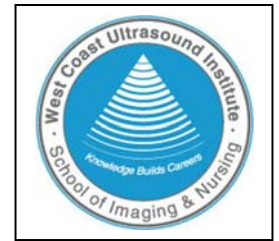
9“GRADUATES EMPLOYED IN THE FIELD” ARE GRADUATES WHO REPORT THAT THEY ARE EMPLOYED WITHIN SIX MONTHS OF GRADUATION IN A POSITION REQUIRING THE SKILLS THEY OBTAINED THROUGH THE EDUCATION PROVIDED BY THE SCHOOL.

10“PLACEMENT RATE” IS THE NUMBER OF EMPLOYED GRADUATES DIVIDED BY THE “GRADUATES AVAILABLE FOR EMPLOYMENT”.

Annual Salary and Wage Reported for Graduates Employed in the Field	BELOW \$30,000	\$30,000 TO 34,999	\$35,000 TO 39,999	\$40,000 TO 44,999	\$45,000 TO 49,999	\$50,000 TO 54,999	\$55,000 TO 59,999	ABOVE \$60,000
---	----------------	--------------------	--------------------	--------------------	--------------------	--------------------	--------------------	----------------

“Annual Salaries of the Placement Rate Cohorts” ARE THE ANNUAL SALARIES IN INCREMENTS OF \$5000.00 REPORTED BY THE GRADUATES WHO ARE EMPLOYED WITHIN SIX MONTHS OF GRADUATION IN A POSITION REQUIRING THE SKILLS THEY OBTAINED THROUGH THE EDUCATION PROVIDED BY THE SCHOOL

WEST COAST ULTRASOUND INSTITUTE
 BEVERLY HILLS CAMPUS
 SCHOOL PERFORMANCE FACT SHEET
 2015-16 ACADEMIC YEAR



**VOCATIONAL NURSING
 FIFTEEN MONTH DIPLOMA PROGRAM-LICENSURE REQUIRED FOR EMPLOYMENT**

The following charts represent the completion, placement and salary information for our students from the two (2) most recently completed academic years. We are required by the Bureau for Private Postsecondary Education to disclose this information to you prior to accepting your enrollment into West Coast Ultrasound Institute. Please review the information carefully for your chosen program of study. Upon satisfactory examination of your program data, you must initial your understanding and acceptance.

Calendar Year	# OF STUDENTS WHO BEGAN PROGRAM ¹	STUDENTS AVAILABLE FOR GRADUATION ²	GRADUATES ³	COMPLETION RATE ⁴	150% GRADUATES ⁵	150% COMPLETION RATE ⁶	STUDENT'S INITIALS BELOW:
2013	41	41	11	27%	16	39%	
2014	26	26	12	46%	1	4%	

Calendar Year	# OF GRADUATES ⁷	GRADUATES AVAILABLE FOR EMPLOYMENT ⁸	GRADUATES EMPLOYED IN THE FIELD ⁹	PLACEMENT RATE ¹⁰	GRADUATES EMPLOYED LESS THAN 32 HOURS PER WEEK	GRADUATES EMPLOYED MORE THAN 32 HOURS PER WEEK	STUDENT'S INITIALS BELOW:
2013	11	11	7	64%	3	4	
2014	12	12	7	58%	3	4	

Calendar Year	# OF STUDENTS TAKING THE NCLEX	# OF STUDENTS PASSING THE NCLEX	# OF STUDENTS FAILING THE NCLEX	NCLEX PASSAGE RATE	STUDENT'S INITIALS BELOW:
2013	11	9	2	82%	
2014	10	7	3	70%	

ANNUAL SALARY AND WAGE REPORTED FOR GRADUATES EMPLOYED IN THE FIELD

Year	GRADUATES AVAILABLE FOR EMPLOYMENT ⁸	GRADUATES EMPLOYED IN THE FIELD ⁹	BELOW \$30,000	\$30,000 TO 34,999	\$35,000 TO 39,999	\$40,000 TO 44,999	\$45,000 TO 49,999	\$50,000 TO 54,999	ABOVE \$55,000	STUDENTS NOT REPORTING SALARY	STUDENT'S INITIALS BELOW
2013	11	7	5	1	1	0	0	0	0	0	
2014	12	7	1	1	1	1	2	0	1		

3 YEAR COHORT DEFAULT RATE PUBLISHED BY USDE:	8.9%	% OF ENROLLED STUDENTS RECEIVING FEDERAL STUDENT LOANS:	82%
--	-------------	--	------------

This fact sheet is filed with the Bureau for Private Postsecondary Education. Regardless of any information you may have relating to completion rates, placement rates, starting rates, starting salaries, or license exam passage rates, this fact sheet contains the information as calculated pursuant to state Law.

Any questions a student may have regarding this fact sheet that have not been satisfactory answered by the institution may be directed to the Bureau for Private Postsecondary Education at P.O. Box 980818 West Sacramento, Ca 95798-0818, www.bppe.ca.gov, (916) 574-7720.

I certify that I have received the School Performance Fact Sheet, and information regarding completions rates, and salary or wage information included in the School Performance Fact Sheet

 Student Signature

 Date

 Print Name

SCHOOL PERFORMANCE FACT SHEET DEFINITIONS:

Calendar Year	# OF STUDENTS WHO BEGAN PROGRAM 1	STUDENTS AVAILABLE FOR GRADUATION 2	GRADUATES 3	COMPLETION RATE 4	150% GRADUATES RATE 5	150% COMPLETION RATE 6	STUDENT'S INITIALS BELOW:
---------------	--	--	--------------------	--------------------------	------------------------------	-------------------------------	---------------------------

1“NUMBER OF STUDENTS WHO BEGAN PROGRAM” IS THE NUMBER OF STUDENTS WHO BEGAN WHO ARE SCHEDULED TO COMPLETE THE PROGRAM WITHIN THE REPORTING CALENDAR YEAR.

2“STUDENTS AVAILABLE FOR GRADUATION” IS THE NUMBER OF STUDENTS WHO BEGAN THE PROGRAM MINUS THE NUMBER OF “STUDENTS UNAVAILABLE FOR GRADUATION”, WHICH MEANS STUDENTS WHO HAVE DIED, BEEN INCARCERATED, OR CALLED TO ACTIVE MILITARY DUTY.

3“GRADUATES” IS THE NUMBER OF STUDENTS WHO COMPLETED THE PROGRAM WITHIN 100% OF THE PUBLISHED LENGTH.

4“COMPLETION RATE” IS THE NUMBER OF GRADUATES DIVIDED BY THE NUMBER OF “STUDENTS AVAILABLE FOR GRADUATION”.

5“150% GRADUATES RATE” IS THE NUMBER OF STUDENTS WHO COMPLETED THE PROGRAM WITHIN 101%-150% OF THE PUBLISHED PROGRAM RATE.

6“150% COMPLETION RATE” IS THE PERCENTAGE OF STUDENTS WHO COMPLETED THE PROGRAM IN THE REPORTED CALENDAR YEAR WITHIN 101% -150% OF THE PUBLISHED LENGTH.

Calendar Year	# OF GRADUATES 7	GRADUATES AVAILABLE FOR EMPLOYMENT 8	GRADUATES EMPLOYED IN THE FIELD 9	PLACEMENT RATE 10	GRADUATES EMPLOYED LESS THAN 32 HOURS PER WEEK	GRADUATES EMPLOYED MORE THAN 32 HOURS PER WEEK	STUDENT'S INITIALS BELOW:
---------------	-------------------------	---	--	--------------------------	--	--	---------------------------

7“# OF GRADUATES” IS THE NUMBER OF STUDENTS WHO COMPLETED THE PROGRAM WITHIN 100% OF THE PUBLISHED LENGTH.

8“GRADUATES AVAILABLE FOR EMPLOYMENT” MEANS THE NUMBER OF GRADUATES MINUS THE NUMBER OF GRADUATES UNAVAILABLE FOR EMPLOYMENT. GRADUATES UNAVAILABLE FOR EMPLOYMENT MEANS GRADUATES WHO HAVE DIED, BECOME INCARCERATED, ARE CALLED TO ACTIVE MILITARY DUTY, OR ARE INTERNATIONAL STUDENTS WHO DO NOT HAVE A VISA ALLOWING EMPLOYMENT.

9“GRADUATES EMPLOYED IN THE FIELD” ARE GRADUATES WHO REPORT THAT THEY ARE EMPLOYED WITHIN SIX MONTHS OF GRADUATION IN A POSITION REQUIRING THE SKILLS THEY OBTAINED THROUGH THE EDUCATION PROVIDED BY THE SCHOOL.

10“PLACEMENT RATE” IS THE NUMBER OF EMPLOYED GRADUATES DIVIDED BY THE “GRADUATES AVAILABLE FOR EMPLOYMENT”.

Calendar Year	# OF STUDENTS TAKING THE NCLEX	# OF STUDENTS PASSING THE NCLEX	# OF STUDENTS FAILING THE NCLEX	NCLEX PASSAGE RATE	STUDENT'S INITIALS BELOW:
---------------	--------------------------------	---------------------------------	---------------------------------	--------------------	---------------------------

IN ORDER TO BECOME A LICENSED VOCATIONAL NURSE IN THE STATE OF CALIFORNIA, VOCATION NURSING GRADUATES MUST PASS THE NATIONAL COUNCIL LICENSE EXAM (NCLEX). THIS CHART SHOWS THE NUMBER OF GRADUATES WHO TOOK THE EXAM IN THE REPORTING YEAR, THE NUMBER WHO PASSED THE EXAMINATION, THE PASSAGE PERCENTAGE RATE, AND THE NUMBER WHO FAILED. YOU CAN ACCESS THE NCLEX EXAM PASS RATE INFORMATION AT http://www.bvnpt.ca.gov/education/vn_stats.shtml.

Annual Salary and Wage Reported for Graduates Employed in the Field	BELOW \$30,000	\$30,000 TO 34,999	\$35,000 TO 39,999	\$40,000 TO 44,999	\$45,000 TO 49,999	\$50,000 TO 54,999	\$55,000 TO 59,999	ABOVE \$60,000
---	----------------	--------------------	--------------------	--------------------	--------------------	--------------------	--------------------	----------------

“Annual Salary and Wage Reported for Graduates Employed in the Field” ARE THE ANNUAL SALARIES IN INCREMENTS OF \$5000.00 REPORTED BY THE GRADUATES WHO ARE EMPLOYED WITHIN SIX MONTHS OF GRADUATION IN A POSITION REQUIRING THE SKILLS THEY OBTAINED THROUGH THE EDUCATION PROVIDED BY THE SCHOOL.

WEST COAST ULTRASOUND INSTITUTE
 ONTARIO BRANCH CAMPUS
 SCHOOL PERFORMANCE FACT SHEET
 2015-16 ACADEMIC YEAR



DIAGNOSTIC MEDICAL SONOGRAPHY (18 MONTH PROGRAM)
ASSOCIATE OF OCCUPATIONAL SCIENCE DEGREE PROGRAM

The following charts represent the completion, placement and salary information for our students from the two (2) most recent completed academic years. We are required by the Bureau for Private Postsecondary Education to disclose this information to you prior to accepting your enrollment into West Coast Ultrasound Institute. Please review the information carefully for your chosen program of study. Upon satisfactory examination of your program data, and prior to signing your enrollment agreement, you must initial your understanding and acceptance

Calendar Year	# OF STUDENTS WHO BEGAN PROGRAM ¹	STUDENTS AVAILABLE FOR GRADUATION ²	GRADUATES ³	COMPLETION RATE ⁴	150% GRADUATES ⁵	150% COMPLETION RATE ⁶	STUDENT'S INITIALS BELOW:
2013	174	174	17	10%	104	60%	
2014	111	111	25	23%	55	50%	

Calendar Year	# OF GRADUATES ⁷	GRADUATES AVAILABLE FOR EMPLOYMENT ⁸	GRADUATES EMPLOYED IN THE FIELD ⁹	PLACEMENT RATE ¹⁰	GRADUATES EMPLOYED LESS THAN 32 HOURS PER WEEK	GRADUATES EMPLOYED MORE THAN 32 HOURS PER WEEK	STUDENT'S INITIALS BELOW:
2013	17	17	13	76%	5	8	
2014	25	25	18	72%	10	8	

ANNUAL SALARY AND WAGE REPORTED FOR GRADUATES EMPLOYED IN THE FIELD											
Year	GRADUATES AVAILABLE FOR EMPLOYMENT ⁸	GRADUATES EMPLOYED IN THE FIELD ⁹	BELOW \$30,000	\$30,000 TO 34,999	\$35,000 TO 39,999	\$40,000 TO 44,999	\$45,000 TO 49,999	\$50,000 TO 54,999	ABOVE \$55,000	STUDENTS NOT REPORTING SALARY	STUDENT'S INITIALS BELOW
2013	17	13	3	1	2	2	0	5	0	0	
2014	25	18	9	2	0	3	2	0	1	1	

3 YEAR COHORT DEFAULT RATE PUBLISHED BY USDE:	% OF ENROLLED STUDENTS RECEIVING FEDERAL STUDENT LOANS:
8.9%	82%

This fact sheet is filed with the Bureau for Private Postsecondary Education. Regardless of any information you may have relating to completion rates, placement rates, starting rates, starting salaries, or license exam passage rates, this fact sheet contains the information as calculated pursuant to state Law.

Information regarding a list of employment positions that have been determined to be within the field of training for this program can be obtained along with a list of objective sources supporting salaries claims for this program, by visiting the Career Services Department.

Any questions a student may have regarding this fact sheet that have not been satisfactory answered by the institution may be directed to the Bureau for Private Postsecondary Education at 2535 Capital Oaks Drive, Suite 400, t Sacramento, Ca 95833, www.bppe.ca.gov, (916) 431-6959 telephone, (916) 263-1897 fax.

I certify that I have received the School Performance Fact Sheet, and information regarding completions rates, and salary or wage information included in the School Performance Fact Sheet

 Student Signature

 Date

 Print Name

SCHOOL PERFORMANCE FACT SHEET DEFINITIONS:

Calendar Year	# OF STUDENTS WHO BEGAN PROGRAM 1	STUDENTS AVAILABLE FOR GRADUATION 2	GRADUATES 3	COMPLETION RATE 4	150% GRADUATES RATE 5	150% COMPLETION RATE 6	STUDENT'S INITIALS BELOW:
---------------	--	--	--------------------	--------------------------	------------------------------	-------------------------------	---------------------------

1“NUMBER OF STUDENTS WHO BEGAN PROGRAM” IS THE NUMBER OF STUDENTS WHO BEGAN WHO ARE SCHEDULED TO COMPLETE THE PROGRAM WITHIN THE REPORTING CALENDAR YEAR.

2 “STUDENTS AVAILABLE FOR GRADUATION” IS THE NUMBER OF STUDENTS WHO BEGAN THE PROGRAM MINUS THE NUMBER OF “STUDENTS UNAVAILABLE FOR GRADUATION”, WHICH MEANS STUDENTS WHO HAVE DIED, BEEN INCARCERATED, OR CALLED TO ACTIVE MILITARY DUTY.

3“GRADUATES” IS THE NUMBER OF STUDENTS WHO COMPLETED THE PROGRAM WITHIN 100% OF THE PUBLISHED LENGTH.

4“COMPLETION RATE” IS THE NUMBER OF GRADUATES DIVIDED BY THE NUMBER OF “STUDENTS AVAILABLE FOR GRADUATION”.

5“150% GRADUATES RATE” IS THE NUMBER OF STUDENTS WHO COMPLETED THE PROGRAM WITHIN 101%-150% OF THE PUBLISHED PROGRAM RATE.

6“150% COMPLETION RATE” IS THE PERCENTAGE OF STUDENTS WHO COMPLETED THE PROGRAM IN THE REPORTED CALENDAR YEAR WITHIN 101% -150% OF THE PUBLISHED LENGTH.

Calendar Year	# OF GRADUATES 7	GRADUATES AVAILABLE FOR EMPLOYMENT 8	GRADUATES EMPLOYED IN THE FIELD 9	PLACEMENT RATE 10	GRADUATES EMPLOYED LESS THAN 32 HOURS PER WEEK	GRADUATES EMPLOYED MORE THAN 32 HOURS PER WEEK	STUDENT'S INITIALS BELOW:
---------------	-------------------------	---	--	--------------------------	--	--	---------------------------

7“# OF GRADUATES” IS THE NUMBER OF STUDENTS WHO COMPLETED THE PROGRAM WITHIN 100% OF THE PUBLISHED LENGTH.

8“GRADUATES AVAILABLE FOR EMPLOYMENT” MEANS THE NUMBER OF GRADUATES MINUS THE NUMBER OF GRADUATES UNAVAILABLE FOR EMPLOYMENT. GRADUATES UNAVAILABLE FOR EMPLOYMENT MEANS GRADUATES WHO HAVE DIED, BECOME INCARCERATED, ARE CALLED TO ACTIVE MILITARY DUTY, OR ARE INTERNATIONAL STUDENTS WHO DO NOT HAVE A VISA ALLOWING EMPLOYMENT.

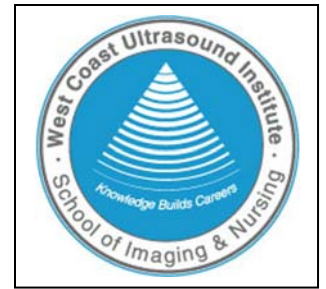
9“GRADUATES EMPLOYED IN THE FIELD” ARE GRADUATES WHO REPORT THAT THEY ARE EMPLOYED WITHIN SIX MONTHS OF GRADUATION IN A POSITION REQUIRING THE SKILLS THEY OBTAINED THROUGH THE EDUCATION PROVIDED BY THE SCHOOL.

10“PLACEMENT RATE” IS THE NUMBER OF EMPLOYED GRADUATES DIVIDED BY THE “GRADUATES AVAILABLE FOR EMPLOYMENT”.

Annual Salary and Wage Reported for Graduates Employed in the Field	BELOW \$30,000	\$30,000 TO 34,999	\$35,000 TO 39,999	\$40,000 TO 44,999	\$45,000 TO 49,999	\$50,000 TO 54,999	\$55,000 TO 59,999	ABOVE \$60,000
---	----------------	--------------------	--------------------	--------------------	--------------------	--------------------	--------------------	----------------

“Annual Salaries of the Placement Rate Cohorts” ARE THE ANNUAL SALARIES IN INCREMENTS OF \$5000.00 REPORTED BY THE GRADUATES WHO ARE EMPLOYED WITHIN SIX MONTHS OF GRADUATION IN A POSITION REQUIRING THE SKILLS THEY OBTAINED THROUGH THE EDUCATION PROVIDED BY THE SCHOOL

WEST COAST ULTRASOUND INSTITUTE
 ONTARIO BRANCH CAMPUS
 SCHOOL PERFORMANCE FACT SHEET
 2015-16 ACADEMIC YEAR



CARDIOVASCULAR SONOGRAPHY (18 MONTH PROGRAM)
ASSOCIATE OF OCCUPATIONAL SCIENCE DEGREE PROGRAM

The following charts represent the completion, placement and salary information for our students from the two (2) most recent completed academic years. We are required by the Bureau for Private Postsecondary Education to disclose this information to you prior to accepting your enrollment into West Coast Ultrasound Institute. Please review the information carefully for your chosen program of study. Upon satisfactory examination of your program data, and prior to signing your enrollment agreement, you must initial your understanding and acceptance

Calendar Year	# OF STUDENTS WHO BEGAN PROGRAM ¹	STUDENTS AVAILABLE FOR GRADUATION ²	GRADUATES ³	COMPLETION RATE ⁴	150% GRADUATES ⁵	150% COMPLETION RATE ⁶	STUDENT'S INITIALS BELOW:
2013	87	87	15	17%	48	55%	
2014	88	88	13	15%	38	43%	

Calendar Year	# OF GRADUATES ⁷	GRADUATES AVAILABLE FOR EMPLOYMENT ⁸	GRADUATES EMPLOYED IN THE FIELD ⁹	PLACEMENT RATE ¹⁰	GRADUATES EMPLOYED LESS THAN 32 HOURS PER WEEK	GRADUATES EMPLOYED MORE THAN 32 HOURS PER WEEK	STUDENT'S INITIALS BELOW:
2013	15	15	11	73%	8	3	
2014	13	13	8	62%	5	3	

ANNUAL SALARY AND WAGE REPORTED FOR GRADUATES EMPLOYED IN THE FIELD

Year	GRADUATES AVAILABLE FOR EMPLOYMENT ⁸	GRADUATES EMPLOYED IN THE FIELD ⁹	BELOW \$30,000	\$30,000 TO 34,999	\$35,000 TO 39,999	\$40,000 TO 44,999	\$45,000 TO 49,999	\$50,000 TO 54,999	ABOVE \$55,000	STUDENTS NOT REPORTING SALARY	STUDENT'S INITIALS BELOW
2013	15	11	4	2	1	1	1	2	0	0	
2014	13	8	5	0	0	1	0	1	0	1	

3 YEAR COHORT DEFAULT RATE PUBLISHED BY USDE:	% OF ENROLLED STUDENTS RECEIVING FEDERAL STUDENT LOANS:
8.9%	82%

This fact sheet is filed with the Bureau for Private Postsecondary Education. Regardless of any information you may have relating to completion rates, placement rates, starting rates, starting salaries, or license exam passage rates, this fact sheet contains the information as calculated pursuant to state Law.

Information regarding a list of employment positions that have been determined to be within the field of training for this program can be obtained along with a list of objective sources supporting salaries claims for this program, by visiting the Career Services Department.

Any questions a student may have regarding this fact sheet that have not been satisfactory answered by the institution may be directed to the Bureau for Private Postsecondary Education at 2535 Capital Oaks Drive, Suite 400, t Sacramento, Ca 95833, www.bppe.ca.gov, (916) 431-6959 telephone, (916) 263-1897 fax.

I certify that I have received the School Performance Fact Sheet, and information regarding completions rates, and salary or wage information included in the School Performance Fact Sheet

 Student Signature

 Date

 Print Name

SCHOOL PERFORMANCE FACT SHEET DEFINITIONS:

Calendar Year	# OF STUDENTS WHO BEGAN PROGRAM 1	STUDENTS AVAILABLE FOR GRADUATION 2	GRADUATES 3	COMPLETION RATE 4	150% GRADUATES RATE 5	150% COMPLETION RATE 6	STUDENT'S INITIALS BELOW:
---------------	--	--	--------------------	--------------------------	------------------------------	-------------------------------	---------------------------

1“NUMBER OF STUDENTS WHO BEGAN PROGRAM” IS THE NUMBER OF STUDENTS WHO BEGAN WHO ARE SCHEDULED TO COMPLETE THE PROGRAM WITHIN THE REPORTING CALENDAR YEAR.

2 “STUDENTS AVAILABLE FOR GRADUATION” IS THE NUMBER OF STUDENTS WHO BEGAN THE PROGRAM MINUS THE NUMBER OF “STUDENTS UNAVAILABLE FOR GRADUATION”, WHICH MEANS STUDENTS WHO HAVE DIED, BEEN INCARCERATED, OR CALLED TO ACTIVE MILITARY DUTY.

3“GRADUATES” IS THE NUMBER OF STUDENTS WHO COMPLETED THE PROGRAM WITHIN 100% OF THE PUBLISHED LENGTH.

4“COMPLETION RATE” IS THE NUMBER OF GRADUATES DIVIDED BY THE NUMBER OF “STUDENTS AVAILABLE FOR GRADUATION”.

5“150% GRADUATES RATE” IS THE NUMBER OF STUDENTS WHO COMPLETED THE PROGRAM WITHIN 101%-150% OF THE PUBLISHED PROGRAM RATE.

6“150% COMPLETION RATE” IS THE PERCENTAGE OF STUDENTS WHO COMPLETED THE PROGRAM IN THE REPORTED CALENDAR YEAR WITHIN 101% -150% OF THE PUBLISHED LENGTH.

Calendar Year	# OF GRADUATES 7	GRADUATES AVAILABLE FOR EMPLOYMENT 8	GRADUATES EMPLOYED IN THE FIELD 9	PLACEMENT RATE 10	GRADUATES EMPLOYED LESS THAN 32 HOURS PER WEEK	GRADUATES EMPLOYED MORE THAN 32 HOURS PER WEEK	STUDENT'S INITIALS BELOW:
---------------	-------------------------	---	--	--------------------------	--	--	---------------------------

7“# OF GRADUATES” IS THE NUMBER OF STUDENTS WHO COMPLETED THE PROGRAM WITHIN 100% OF THE PUBLISHED LENGTH.

8“GRADUATES AVAILABLE FOR EMPLOYMENT” MEANS THE NUMBER OF GRADUATES MINUS THE NUMBER OF GRADUATES UNAVAILABLE FOR EMPLOYMENT. GRADUATES UNAVAILABLE FOR EMPLOYMENT MEANS GRADUATES WHO HAVE DIED, BECOME INCARCERATED, ARE CALLED TO ACTIVE MILITARY DUTY, OR ARE INTERNATIONAL STUDENTS WHO DO NOT HAVE A VISA ALLOWING EMPLOYMENT.

9“GRADUATES EMPLOYED IN THE FIELD” ARE GRADUATES WHO REPORT THAT THEY ARE EMPLOYED WITHIN SIX MONTHS OF GRADUATION IN A POSITION REQUIRING THE SKILLS THEY OBTAINED THROUGH THE EDUCATION PROVIDED BY THE SCHOOL.

10“PLACEMENT RATE” IS THE NUMBER OF EMPLOYED GRADUATES DIVIDED BY THE “GRADUATES AVAILABLE FOR EMPLOYMENT”.

Annual Salary and Wage Reported for Graduates Employed in the Field	BELOW \$30,000	\$30,000 TO 34,999	\$35,000 TO 39,999	\$40,000 TO 44,999	\$45,000 TO 49,999	\$50,000 TO 54,999	\$55,000 TO 59,999	ABOVE \$60,000
---	----------------	--------------------	--------------------	--------------------	--------------------	--------------------	--------------------	----------------

“Annual Salaries of the Placement Rate Cohorts” ARE THE ANNUAL SALARIES IN INCREMENTS OF \$5000.00 REPORTED BY THE GRADUATES WHO ARE EMPLOYED WITHIN SIX MONTHS OF GRADUATION IN A POSITION REQUIRING THE SKILLS THEY OBTAINED THROUGH THE EDUCATION PROVIDED BY THE SCHOOL

WEST COAST ULTRASOUND INSTITUTE
 ONTARIO BRANCH CAMPUS
 SCHOOL PERFORMANCE FACT SHEET
 2015-16 ACADEMIC YEAR



MAGNETIC RESONANCE IMAGING (18 MONTH PROGRAM)
ASSOCIATE OF OCCUPATIONAL SCIENCE DEGREE PROGRAM

The following charts represent the completion, placement and salary information for our students from the two (2) most recent completed academic years. We are required by the Bureau for Private Postsecondary Education to disclose this information to you prior to accepting your enrollment into West Coast Ultrasound Institute. Please review the information carefully for your chosen program of study. Upon satisfactory examination of your program data, and prior to signing your enrollment agreement, you must initial your understanding and acceptance

Calendar Year	# OF STUDENTS WHO BEGAN PROGRAM ¹	STUDENTS AVAILABLE FOR GRADUATION ²	GRADUATES ³	COMPLETION RATE ⁴	150% GRADUATES ⁵	150% COMPLETION RATE ⁶	STUDENT'S INITIALS BELOW:
2013	47	47	15	32%	24	51%	
2014	39	39	11	28%	20	51%	

Calendar Year	# OF GRADUATES ⁷	GRADUATES AVAILABLE FOR EMPLOYMENT ⁸	GRADUATES EMPLOYED IN THE FIELD ⁹	PLACEMENT RATE ¹⁰	GRADUATES EMPLOYED LESS THAN 32 HOURS PER WEEK	GRADUATES EMPLOYED MORE THAN 32 HOURS PER WEEK	STUDENT'S INITIALS BELOW:
2013	15	15	9	60%	4	5	
2014	11	11	6	55%	5	1	

Year	GRADUATES AVAILABLE FOR EMPLOYMENT ⁸	GRADUATES EMPLOYED IN THE FIELD ⁹	ANNUAL SALARY AND WAGE REPORTED FOR GRADUATES EMPLOYED IN THE FIELD							STUDENTS NOT REPORTING SALARY	STUDENT'S INITIALS BELOW
			BELOW \$30,000	\$30,000 TO 34,999	\$35,000 TO 39,999	\$40,000 TO 44,999	\$45,000 TO 49,999	\$50,000 TO 54,999	ABOVE \$55,000		
2013	15	9	6	0	1	1	0	0	1	0	
2014	11	6	5	0	0	0	0	1	0	0	
3 YEAR COHORT DEFAULT RATE PUBLISHED BY USDE:				% OF ENROLLED STUDENTS RECEIVING FEDERAL STUDENT LOANS:							
8.9%				82%							

This fact sheet is filed with the Bureau for Private Postsecondary Education. Regardless of any information you may have relating to completion rates, placement rates, starting rates, starting salaries, or license exam passage rates, this fact sheet contains the information as calculated pursuant to state Law.

Information regarding a list of employment positions that have been determined to be within the field of training for this program can be obtained along with a list of objective sources supporting salaries claims for this program, by visiting the Career Services Department.

Any questions a student may have regarding this fact sheet that have not been satisfactory answered by the institution may be directed to the Bureau for Private Postsecondary Education at 2535 Capital Oaks Drive, Suite 400, t Sacramento, Ca 95833, www.bppe.ca.gov, (916) 431-6959 telephone, (916) 263-1897 fax.

I certify that I have received the School Performance Fact Sheet, and information regarding completions rates, and salary or wage information included in the School Performance Fact Sheet

 Student Signature

 Date

 Print Name

SCHOOL PERFORMANCE FACT SHEET DEFINITIONS:

Calendar Year	# OF STUDENTS WHO BEGAN PROGRAM 1	STUDENTS AVAILABLE FOR GRADUATION 2	GRADUATES 3	COMPLETION RATE 4	150% GRADUATES RATE 5	150% COMPLETION RATE 6	STUDENT'S INITIALS BELOW:
---------------	--	--	--------------------	--------------------------	------------------------------	-------------------------------	---------------------------

1“NUMBER OF STUDENTS WHO BEGAN PROGRAM” IS THE NUMBER OF STUDENTS WHO BEGAN WHO ARE SCHEDULED TO COMPLETE THE PROGRAM WITHIN THE REPORTING CALENDAR YEAR.

2 “STUDENTS AVAILABLE FOR GRADUATION” IS THE NUMBER OF STUDENTS WHO BEGAN THE PROGRAM MINUS THE NUMBER OF “STUDENTS UNAVAILABLE FOR GRADUATION”, WHICH MEANS STUDENTS WHO HAVE DIED, BEEN INCARCERATED, OR CALLED TO ACTIVE MILITARY DUTY.

3“GRADUATES” IS THE NUMBER OF STUDENTS WHO COMPLETED THE PROGRAM WITHIN 100% OF THE PUBLISHED LENGTH.

4“COMPLETION RATE” IS THE NUMBER OF GRADUATES DIVIDED BY THE NUMBER OF “STUDENTS AVAILABLE FOR GRADUATION”.

5“150% GRADUATES RATE” IS THE NUMBER OF STUDENTS WHO COMPLETED THE PROGRAM WITHIN 101%-150% OF THE PUBLISHED PROGRAM RATE.

6“150% COMPLETION RATE” IS THE PERCENTAGE OF STUDENTS WHO COMPLETED THE PROGRAM IN THE REPORTED CALENDAR YEAR WITHIN 101% -150% OF THE PUBLISHED LENGTH.

Calendar Year	# OF GRADUATES 7	GRADUATES AVAILABLE FOR EMPLOYMENT 8	GRADUATES EMPLOYED IN THE FIELD 9	PLACEMENT RATE 10	GRADUATES EMPLOYED LESS THAN 32 HOURS PER WEEK	GRADUATES EMPLOYED MORE THAN 32 HOURS PER WEEK	STUDENT'S INITIALS BELOW:
---------------	-------------------------	---	--	--------------------------	--	--	---------------------------

7“# OF GRADUATES” IS THE NUMBER OF STUDENTS WHO COMPLETED THE PROGRAM WITHIN 100% OF THE PUBLISHED LENGTH.

8“GRADUATES AVAILABLE FOR EMPLOYMENT” MEANS THE NUMBER OF GRADUATES MINUS THE NUMBER OF GRADUATES UNAVAILABLE FOR EMPLOYMENT. GRADUATES UNAVAILABLE FOR EMPLOYMENT MEANS GRADUATES WHO HAVE DIED, BECOME INCARCERATED, ARE CALLED TO ACTIVE MILITARY DUTY, OR ARE INTERNATIONAL STUDENTS WHO DO NOT HAVE A VISA ALLOWING EMPLOYMENT.

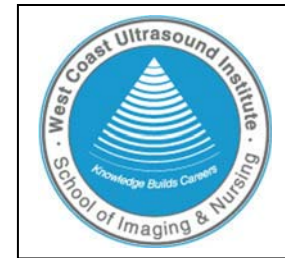
9“GRADUATES EMPLOYED IN THE FIELD” ARE GRADUATES WHO REPORT THAT THEY ARE EMPLOYED WITHIN SIX MONTHS OF GRADUATION IN A POSITION REQUIRING THE SKILLS THEY OBTAINED THROUGH THE EDUCATION PROVIDED BY THE SCHOOL.

10“PLACEMENT RATE” IS THE NUMBER OF EMPLOYED GRADUATES DIVIDED BY THE “GRADUATES AVAILABLE FOR EMPLOYMENT”.

Annual Salary and Wage Reported for Graduates Employed in the Field	BELOW \$30,000	\$30,000 TO 34,999	\$35,000 TO 39,999	\$40,000 TO 44,999	\$45,000 TO 49,999	\$50,000 TO 54,999	\$55,000 TO 59,999	ABOVE \$60,000
---	----------------	--------------------	--------------------	--------------------	--------------------	--------------------	--------------------	----------------

“Annual Salaries of the Placement Rate Cohorts” ARE THE ANNUAL SALARIES IN INCREMENTS OF \$5000.00 REPORTED BY THE GRADUATES WHO ARE EMPLOYED WITHIN SIX MONTHS OF GRADUATION IN A POSITION REQUIRING THE SKILLS THEY OBTAINED THROUGH THE EDUCATION PROVIDED BY THE SCHOOL

WEST COAST ULTRASOUND INSTITUTE
 ONTARIO BRANCH CAMPUS
 SCHOOL PERFORMANCE FACT SHEET
 2015-16 ACADEMIC YEAR



**MAGNETIC RESONANCE IMAGING SHORT
 NINE MONTH DIPLOMA PROGRAM**

The following charts represent the completion, placement and salary information for our students from the two (2) most recent completed academic years. We are required by the Bureau for Private Postsecondary Education to disclose this information to you prior to accepting your enrollment into West Coast Ultrasound Institute. Please review the information carefully for your chosen program of study. Upon satisfactory examination of your program data, and prior to signing your enrollment agreement, you must initial your understanding and acceptance

Calendar Year	# OF STUDENTS WHO BEGAN PROGRAM ¹	STUDENTS AVAILABLE FOR GRADUATION ²	GRADUATES ³	COMPLETION RATE ⁴	150% GRADUATES ⁵	150% COMPLETION RATE ⁶	STUDENT'S INITIALS BELOW:
2013	3	3	2	67%	0	0	
2014	0	0	0	0	0	0	

Calendar Year	# OF GRADUATES ⁷	GRADUATES AVAILABLE FOR EMPLOYMENT ⁸	GRADUATES EMPLOYED IN THE FIELD ⁹	PLACEMENT RATE ¹⁰	GRADUATES EMPLOYED LESS THAN 32 HOURS PER WEEK	GRADUATES EMPLOYED MORE THAN 32 HOURS PER WEEK	STUDENT'S INITIALS BELOW:
2013	2	2	1	50%	1	0	
2014	0	0	0	0	0	0	

ANNUAL SALARY AND WAGE REPORTED FOR GRADUATES EMPLOYED IN THE FIELD											
Year	GRADUATES AVAILABLE FOR EMPLOYMENT ⁸	GRADUATES EMPLOYED IN THE FIELD ⁹	BELOW \$30,000	\$30,000 TO 34,999	\$35,000 TO 39,999	\$40,000 TO 44,999	\$45,000 TO 49,999	\$50,000 TO 54,999	ABOVE \$55,000	STUDENTS NOT REPORTING SALARY	STUDENT'S INITIALS BELOW
2013	2	1	1	0	0	0	0	0	0	0	
2014	0	0	0	0	0	0	0	0	0	0	

3 YEAR COHORT DEFAULT RATE PUBLISHED BY USDE:	% OF ENROLLED STUDENTS RECEIVING FEDERAL STUDENT LOANS:
8.9%	82%

This fact sheet is filed with the Bureau for Private Postsecondary Education. Regardless of any information you may have relating to completion rates, placement rates, starting rates, starting salaries, or license exam passage rates, this fact sheet contains the information as calculated pursuant to state Law.

Information regarding a list of employment positions that have been determined to be within the field of training for this program can be obtained along with a list of objective sources supporting salaries claims for this program, by visiting the Career Services Department.

Any questions a student may have regarding this fact sheet that have not been satisfactory answered by the institution may be directed to the Bureau for Private Postsecondary Education at 2535 Capital Oaks Drive, Suite 400, t Sacramento, Ca 95833, www.bppe.ca.gov, (916) 431-6959 telephone, (916) 263-1897 fax.

I certify that I have received the School Performance Fact Sheet, and information regarding completions rates, and salary or wage information included in the School Performance Fact Sheet

 Student Signature

 Date

 Print Name

SCHOOL PERFORMANCE FACT SHEET DEFINITIONS:

Calendar Year	# OF STUDENTS WHO BEGAN PROGRAM 1	STUDENTS AVAILABLE FOR GRADUATION 2	GRADUATES 3	COMPLETION RATE 4	150% GRADUATES RATE 5	150% COMPLETION RATE 6	STUDENT'S INITIALS BELOW:
---------------	--	--	--------------------	--------------------------	------------------------------	-------------------------------	---------------------------

1“NUMBER OF STUDENTS WHO BEGAN PROGRAM” IS THE NUMBER OF STUDENTS WHO BEGAN WHO ARE SCHEDULED TO COMPLETE THE PROGRAM WITHIN THE REPORTING CALENDAR YEAR.

2 “STUDENTS AVAILABLE FOR GRADUATION” IS THE NUMBER OF STUDENTS WHO BEGAN THE PROGRAM MINUS THE NUMBER OF “STUDENTS UNAVAILABLE FOR GRADUATION”, WHICH MEANS STUDENTS WHO HAVE DIED, BEEN INCARCERATED, OR CALLED TO ACTIVE MILITARY DUTY.

3“GRADUATES” IS THE NUMBER OF STUDENTS WHO COMPLETED THE PROGRAM WITHIN 100% OF THE PUBLISHED LENGTH.

4“COMPLETION RATE” IS THE NUMBER OF GRADUATES DIVIDED BY THE NUMBER OF “STUDENTS AVAILABLE FOR GRADUATION”.

5“150% GRADUATES RATE” IS THE NUMBER OF STUDENTS WHO COMPLETED THE PROGRAM WITHIN 101%-150% OF THE PUBLISHED PROGRAM RATE.

6“150% COMPLETION RATE” IS THE PERCENTAGE OF STUDENTS WHO COMPLETED THE PROGRAM IN THE REPORTED CALENDAR YEAR WITHIN 101% -150% OF THE PUBLISHED LENGTH.

Calendar Year	# OF GRADUATES 7	GRADUATES AVAILABLE FOR EMPLOYMENT 8	GRADUATES EMPLOYED IN THE FIELD 9	PLACEMENT RATE 10	GRADUATES EMPLOYED LESS THAN 32 HOURS PER WEEK	GRADUATES EMPLOYED MORE THAN 32 HOURS PER WEEK	STUDENT'S INITIALS BELOW:
---------------	-------------------------	---	--	--------------------------	--	--	---------------------------

7“# OF GRADUATES” IS THE NUMBER OF STUDENTS WHO COMPLETED THE PROGRAM WITHIN 100% OF THE PUBLISHED LENGTH.

8“GRADUATES AVAILABLE FOR EMPLOYMENT” MEANS THE NUMBER OF GRADUATES MINUS THE NUMBER OF GRADUATES UNAVAILABLE FOR EMPLOYMENT. GRADUATES UNAVAILABLE FOR EMPLOYMENT MEANS GRADUATES WHO HAVE DIED, BECOME INCARCERATED, ARE CALLED TO ACTIVE MILITARY DUTY, OR ARE INTERNATIONAL STUDENTS WHO DO NOT HAVE A VISA ALLOWING EMPLOYMENT.

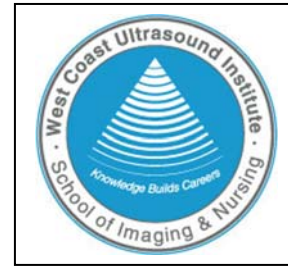
9“GRADUATES EMPLOYED IN THE FIELD” ARE GRADUATES WHO REPORT THAT THEY ARE EMPLOYED WITHIN SIX MONTHS OF GRADUATION IN A POSITION REQUIRING THE SKILLS THEY OBTAINED THROUGH THE EDUCATION PROVIDED BY THE SCHOOL.

10“PLACEMENT RATE” IS THE NUMBER OF EMPLOYED GRADUATES DIVIDED BY THE “GRADUATES AVAILABLE FOR EMPLOYMENT”.

Annual Salary and Wage Reported for Graduates Employed in the Field	BELOW \$30,000	\$30,000 TO 34,999	\$35,000 TO 39,999	\$40,000 TO 44,999	\$45,000 TO 49,999	\$50,000 TO 54,999	\$55,000 TO 59,999	ABOVE \$60,000
---	----------------	--------------------	--------------------	--------------------	--------------------	--------------------	--------------------	----------------

“Annual Salaries of the Placement Rate Cohorts” ARE THE ANNUAL SALARIES IN INCREMENTS OF \$5000.00 REPORTED BY THE GRADUATES WHO ARE EMPLOYED WITHIN SIX MONTHS OF GRADUATION IN A POSITION REQUIRING THE SKILLS THEY OBTAINED THROUGH THE EDUCATION PROVIDED BY THE SCHOOL

WEST COAST ULTRASOUND INSTITUTE
 ONTARIO BRANCH CAMPUS
 SCHOOL PERFORMANCE FACT SHEET
 2015-16 ACADEMIC YEAR



**MAGNETIC RESONANCE IMAGING LONG
 FIFTEEN MONTH DIPLOMA PROGRAM**

The following charts represent the completion, placement and salary information for our students from the two (2) most recent completed academic years. We are required by the Bureau for Private Postsecondary Education to disclose this information to you prior to accepting your enrollment into West Coast Ultrasound Institute. Please review the information carefully for your chosen program of study. Upon satisfactory examination of your program data, and prior to signing your enrollment agreement, you must initial your understanding and acceptance

Calendar Year	# OF STUDENTS WHO BEGAN PROGRAM ¹	STUDENTS AVAILABLE FOR GRADUATION ²	GRADUATES ³	COMPLETION RATE ⁴	150% GRADUATES ⁵	150% COMPLETION RATE ⁶	STUDENT'S INITIALS BELOW:
2013	3	3	2	67%	0	0	
2014	0	0	0	0	0	0	

Calendar Year	# OF GRADUATES ⁷	GRADUATES AVAILABLE FOR EMPLOYMENT ⁸	GRADUATES EMPLOYED IN THE FIELD ⁹	PLACEMENT RATE ¹⁰	GRADUATES EMPLOYED LESS THAN 32 HOURS PER WEEK	GRADUATES EMPLOYED MORE THAN 32 HOURS PER WEEK	STUDENT'S INITIALS BELOW:
2013	2	2	1	50%	0	1	
2014	0	0	0	0	0	0	

Year	GRADUATES AVAILABLE FOR EMPLOYMENT ⁸	GRADUATES EMPLOYED IN THE FIELD ⁹	ANNUAL SALARY AND WAGE REPORTED FOR GRADUATES EMPLOYED IN THE FIELD							STUDENTS NOT REPORTING SALARY	STUDENT'S INITIALS BELOW
			BELOW \$30,000	\$30,000 TO 34,999	\$35,000 TO 39,999	\$40,000 TO 44,999	\$45,000 TO 49,999	\$50,000 TO 54,999	ABOVE \$55,000		
2013	2	1	0	0	0	0	0	0	1	0	
2014	0	0	0	0	0	0	0	0	0	0	

3 YEAR COHORT DEFAULT RATE PUBLISHED BY USDE:	% OF ENROLLED STUDENTS RECEIVING FEDERAL STUDENT LOANS:
8.9%	82%

This fact sheet is filed with the Bureau for Private Postsecondary Education. Regardless of any information you may have relating to completion rates, placement rates, starting rates, starting salaries, or license exam passage rates, this fact sheet contains the information as calculated pursuant to state Law.

Information regarding a list of employment positions that have been determined to be within the field of training for this program can be obtained along with a list of objective sources supporting salaries claims for this program, by visiting the Career Services Department.

Any questions a student may have regarding this fact sheet that have not been satisfactory answered by the institution may be directed to the Bureau for Private Postsecondary Education at 2535 Capital Oaks Drive, Suite 400, t Sacramento, Ca 95833, www.bppe.ca.gov, (916) 431-6959 telephone, (916) 263-1897 fax.

I certify that I have received the School Performance Fact Sheet, and information regarding completions rates, and salary or wage information included in the School Performance Fact Sheet

 Student Signature

 Date

 Print Name

SCHOOL PERFORMANCE FACT SHEET DEFINITIONS:

Calendar Year	# OF STUDENTS WHO BEGAN PROGRAM 1	STUDENTS AVAILABLE FOR GRADUATION 2	GRADUATES 3	COMPLETION RATE 4	150% GRADUATES RATE 5	150% COMPLETION RATE 6	STUDENT'S INITIALS BELOW:
---------------	--	--	--------------------	--------------------------	------------------------------	-------------------------------	---------------------------

1“NUMBER OF STUDENTS WHO BEGAN PROGRAM” IS THE NUMBER OF STUDENTS WHO BEGAN WHO ARE SCHEDULED TO COMPLETE THE PROGRAM WITHIN THE REPORTING CALENDAR YEAR.

2 “STUDENTS AVAILABLE FOR GRADUATION” IS THE NUMBER OF STUDENTS WHO BEGAN THE PROGRAM MINUS THE NUMBER OF “STUDENTS UNAVAILABLE FOR GRADUATION”, WHICH MEANS STUDENTS WHO HAVE DIED, BEEN INCARCERATED, OR CALLED TO ACTIVE MILITARY DUTY.

3“GRADUATES” IS THE NUMBER OF STUDENTS WHO COMPLETED THE PROGRAM WITHIN 100% OF THE PUBLISHED LENGTH.

4“COMPLETION RATE” IS THE NUMBER OF GRADUATES DIVIDED BY THE NUMBER OF “STUDENTS AVAILABLE FOR GRADUATION”.

5“150% GRADUATES RATE” IS THE NUMBER OF STUDENTS WHO COMPLETED THE PROGRAM WITHIN 101%-150% OF THE PUBLISHED PROGRAM RATE.

6“150% COMPLETION RATE” IS THE PERCENTAGE OF STUDENTS WHO COMPLETED THE PROGRAM IN THE REPORTED CALENDAR YEAR WITHIN 101% -150% OF THE PUBLISHED LENGTH.

Calendar Year	# OF GRADUATES 7	GRADUATES AVAILABLE FOR EMPLOYMENT 8	GRADUATES EMPLOYED IN THE FIELD 9	PLACEMENT RATE 10	GRADUATES EMPLOYED LESS THAN 32 HOURS PER WEEK	GRADUATES EMPLOYED MORE THAN 32 HOURS PER WEEK	STUDENT'S INITIALS BELOW:
---------------	-------------------------	---	--	--------------------------	--	--	---------------------------

7“# OF GRADUATES” IS THE NUMBER OF STUDENTS WHO COMPLETED THE PROGRAM WITHIN 100% OF THE PUBLISHED LENGTH.

8“GRADUATES AVAILABLE FOR EMPLOYMENT” MEANS THE NUMBER OF GRADUATES MINUS THE NUMBER OF GRADUATES UNAVAILABLE FOR EMPLOYMENT. GRADUATES UNAVAILABLE FOR EMPLOYMENT MEANS GRADUATES WHO HAVE DIED, BECOME INCARCERATED, ARE CALLED TO ACTIVE MILITARY DUTY, OR ARE INTERNATIONAL STUDENTS WHO DO NOT HAVE A VISA ALLOWING EMPLOYMENT.

9“GRADUATES EMPLOYED IN THE FIELD” ARE GRADUATES WHO REPORT THAT THEY ARE EMPLOYED WITHIN SIX MONTHS OF GRADUATION IN A POSITION REQUIRING THE SKILLS THEY OBTAINED THROUGH THE EDUCATION PROVIDED BY THE SCHOOL.

10“PLACEMENT RATE” IS THE NUMBER OF EMPLOYED GRADUATES DIVIDED BY THE “GRADUATES AVAILABLE FOR EMPLOYMENT”.

Annual Salary and Wage Reported for Graduates Employed in the Field	BELOW \$30,000	\$30,000 TO 34,999	\$35,000 TO 39,999	\$40,000 TO 44,999	\$45,000 TO 49,999	\$50,000 TO 54,999	\$55,000 TO 59,999	ABOVE \$60,000
---	----------------	--------------------	--------------------	--------------------	--------------------	--------------------	--------------------	----------------

“Annual Salaries of the Placement Rate Cohorts” ARE THE ANNUAL SALARIES IN INCREMENTS OF \$5000.00 REPORTED BY THE GRADUATES WHO ARE EMPLOYED WITHIN SIX MONTHS OF GRADUATION IN A POSITION REQUIRING THE SKILLS THEY OBTAINED THROUGH THE EDUCATION PROVIDED BY THE SCHOOL

WEST COAST ULTRASOUND INSTITUTE
 ONTARIO BRANCH CAMPUS
 SCHOOL PERFORMANCE FACT SHEET
 2015-16 ACADEMIC YEAR



**PEDIATRIC CARDIAC ULTRASOUND AND CONGENITAL HEART DISEASE
 NINE MONTH DIPLOMA PROGRAM**

The following charts represent the completion, placement and salary information for our students from the two (2) most recent completed academic years. We are required by the Bureau for Private Postsecondary Education to disclose this information to you prior to accepting your enrollment into West Coast Ultrasound Institute. Please review the information carefully for your chosen program of study. Upon satisfactory examination of your program data, and prior to signing your enrollment agreement, you must initial your understanding and acceptance

Calendar Year	# OF STUDENTS WHO BEGAN PROGRAM ¹	STUDENTS AVAILABLE FOR GRADUATION ²	GRADUATES ³	COMPLETION RATE ⁴	150% GRADUATES ⁵	150% COMPLETION RATE ⁶	STUDENT'S INITIALS BELOW:
2013	0	0	0	0	0	0	
2014	4	4	3	75%	0	0	

Calendar Year	# OF GRADUATES ⁷	GRADUATES AVAILABLE FOR EMPLOYMENT ⁸	GRADUATES EMPLOYED IN THE FIELD ⁹	PLACEMENT RATE ¹⁰	GRADUATES EMPLOYED LESS THAN 32 HOURS PER WEEK	GRADUATES EMPLOYED MORE THAN 32 HOURS PER WEEK	STUDENT'S INITIALS BELOW:
2013	0	0	0	0	0	0	
2014	3	3	2	67%	2	0	

ANNUAL SALARY AND WAGE REPORTED FOR GRADUATES EMPLOYED IN THE FIELD

Year	GRADUATES AVAILABLE FOR EMPLOYMENT ⁸	GRADUATES EMPLOYED IN THE FIELD ⁹	BELOW \$30,000	\$30,000 TO 34,999	\$35,000 TO 39,999	\$40,000 TO 44,999	\$45,000 TO 49,999	\$50,000 TO 54,999	ABOVE \$55,000	STUDENTS NOT REPORTING SALARY	STUDENT'S INITIALS BELOW
2013	0	0	0	0	0	0	0	0	0	0	
2014	3	2	1	1	0	0	0	0	0		

3 YEAR COHORT DEFAULT RATE PUBLISHED BY USDE:	% OF ENROLLED STUDENTS RECEIVING FEDERAL STUDENT LOANS:
8.9%	82%

This fact sheet is filed with the Bureau for Private Postsecondary Education. Regardless of any information you may have relating to completion rates, placement rates, starting rates, starting salaries, or license exam passage rates, this fact sheet contains the information as calculated pursuant to state Law.

Information regarding a list of employment positions that have been determined to be within the field of training for this program can be obtained along with a list of objective sources supporting salaries claims for this program, by visiting the Career Services Department.

Any questions a student may have regarding this fact sheet that have not been satisfactory answered by the institution may be directed to the Bureau for Private Postsecondary Education at 2535 Capital Oaks Drive, Suite 400, t Sacramento, Ca 95833, www.bppe.ca.gov, (916) 431-6959 telephone, (916) 263-1897 fax.

I certify that I have received the School Performance Fact Sheet, and information regarding completions rates, and salary or wage information included in the School Performance Fact Sheet

 Student Signature

 Date

 Print Name

SCHOOL PERFORMANCE FACT SHEET DEFINITIONS:

Calendar Year	# OF STUDENTS WHO BEGAN PROGRAM 1	STUDENTS AVAILABLE FOR GRADUATION 2	GRADUATES 3	COMPLETION RATE 4	150% GRADUATES RATE 5	150% COMPLETION RATE 6	STUDENT'S INITIALS BELOW:
---------------	--	--	--------------------	--------------------------	------------------------------	-------------------------------	---------------------------

1“NUMBER OF STUDENTS WHO BEGAN PROGRAM” IS THE NUMBER OF STUDENTS WHO BEGAN WHO ARE SCHEDULED TO COMPLETE THE PROGRAM WITHIN THE REPORTING CALENDAR YEAR.

2 “STUDENTS AVAILABLE FOR GRADUATION” IS THE NUMBER OF STUDENTS WHO BEGAN THE PROGRAM MINUS THE NUMBER OF “STUDENTS UNAVAILABLE FOR GRADUATION”, WHICH MEANS STUDENTS WHO HAVE DIED, BEEN INCARCERATED, OR CALLED TO ACTIVE MILITARY DUTY.

3“GRADUATES” IS THE NUMBER OF STUDENTS WHO COMPLETED THE PROGRAM WITHIN 100% OF THE PUBLISHED LENGTH.

4“COMPLETION RATE” IS THE NUMBER OF GRADUATES DIVIDED BY THE NUMBER OF “STUDENTS AVAILABLE FOR GRADUATION”.

5“150% GRADUATES RATE” IS THE NUMBER OF STUDENTS WHO COMPLETED THE PROGRAM WITHIN 101%-150% OF THE PUBLISHED PROGRAM RATE.

6“150% COMPLETION RATE” IS THE PERCENTAGE OF STUDENTS WHO COMPLETED THE PROGRAM IN THE REPORTED CALENDAR YEAR WITHIN 101% -150% OF THE PUBLISHED LENGTH.

Calendar Year	# OF GRADUATES 7	GRADUATES AVAILABLE FOR EMPLOYMENT 8	GRADUATES EMPLOYED IN THE FIELD 9	PLACEMENT RATE 10	GRADUATES EMPLOYED LESS THAN 32 HOURS PER WEEK	GRADUATES EMPLOYED MORE THAN 32 HOURS PER WEEK	STUDENT'S INITIALS BELOW:
---------------	-------------------------	---	--	--------------------------	--	--	---------------------------

7“# OF GRADUATES” IS THE NUMBER OF STUDENTS WHO COMPLETED THE PROGRAM WITHIN 100% OF THE PUBLISHED LENGTH.

8“GRADUATES AVAILABLE FOR EMPLOYMENT” MEANS THE NUMBER OF GRADUATES MINUS THE NUMBER OF GRADUATES UNAVAILABLE FOR EMPLOYMENT. GRADUATES UNAVAILABLE FOR EMPLOYMENT MEANS GRADUATES WHO HAVE DIED, BECOME INCARCERATED, ARE CALLED TO ACTIVE MILITARY DUTY, OR ARE INTERNATIONAL STUDENTS WHO DO NOT HAVE A VISA ALLOWING EMPLOYMENT.

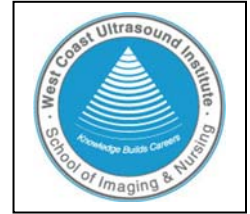
9“GRADUATES EMPLOYED IN THE FIELD” ARE GRADUATES WHO REPORT THAT THEY ARE EMPLOYED WITHIN SIX MONTHS OF GRADUATION IN A POSITION REQUIRING THE SKILLS THEY OBTAINED THROUGH THE EDUCATION PROVIDED BY THE SCHOOL.

10“PLACEMENT RATE” IS THE NUMBER OF EMPLOYED GRADUATES DIVIDED BY THE “GRADUATES AVAILABLE FOR EMPLOYMENT”.

Annual Salary and Wage Reported for Graduates Employed in the Field	BELOW \$30,000	\$30,000 TO 34,999	\$35,000 TO 39,999	\$40,000 TO 44,999	\$45,000 TO 49,999	\$50,000 TO 54,999	\$55,000 TO 59,999	ABOVE \$60,000
---	----------------	--------------------	--------------------	--------------------	--------------------	--------------------	--------------------	----------------

“Annual Salaries of the Placement Rate Cohorts” ARE THE ANNUAL SALARIES IN INCREMENTS OF \$5000.00 REPORTED BY THE GRADUATES WHO ARE EMPLOYED WITHIN SIX MONTHS OF GRADUATION IN A POSITION REQUIRING THE SKILLS THEY OBTAINED THROUGH THE EDUCATION PROVIDED BY THE SCHOOL

WEST COAST ULTRASOUND INSTITUTE
 ONTARIO BRANCH CAMPUS
 SCHOOL PERFORMANCE FACT SHEET
 2015-16 ACADEMIC YEAR



**VOCATIONAL NURSING
 FIFTEEN MONTH DIPLOMA PROGRAM-LICENSURE REQUIRED FOR EMPLOYMENT**

The following charts represent the completion, placement and salary information for our students from the two (2) most recently completed academic years. We are required by the Bureau for Private Postsecondary Education to disclose this information to you prior to accepting your enrollment into West Coast Ultrasound Institute. Please review the information carefully for your chosen program of study. Upon satisfactory examination of your program data, you must initial your understanding and acceptance.

Calendar Year	# OF STUDENTS WHO BEGAN PROGRAM ¹	STUDENTS AVAILABLE FOR GRADUATION ²	GRADUATES ³	COMPLETION RATE ⁴	150% GRADUATES ⁵	150% COMPLETION RATE ⁶	STUDENT'S INITIALS BELOW:
2013	56	56	16	29%	14	25%	
2014	72	72	20	28%	22	31%	

Calendar Year	# OF GRADUATES ⁷	GRADUATES AVAILABLE FOR EMPLOYMENT ⁸	GRADUATES EMPLOYED IN THE FIELD ⁹	PLACEMENT RATE ¹⁰	GRADUATES EMPLOYED LESS THAN 32 HOURS PER WEEK	GRADUATES EMPLOYED MORE THAN 32 HOURS PER WEEK	STUDENT'S INITIALS BELOW:
2013	16	14	8	57%	5	3	
2014	20	20	12	60%	2	10	

Calendar Year	# OF STUDENTS TAKING THE NCLEX	# OF STUDENTS PASSING THE NCLEX	# OF STUDENTS FAILING THE NCLEX	NCLEX PASSAGE RATE	STUDENT'S INITIALS BELOW:
2013	14	9	5	64%	
2014	18	17	1	94%	

ANNUAL SALARY AND WAGE REPORTED FOR GRADUATES EMPLOYED IN THE FIELD

Year	GRADUATES AVAILABLE FOR EMPLOYMENT ⁸	GRADUATES EMPLOYED IN THE FIELD ⁹	BELOW \$30,000	\$30,000 TO 34,999	\$35,000 TO 39,999	\$40,000 TO 44,999	\$45,000 TO 49,999	\$50,000 TO 54,999	ABOVE \$55,000	STUDENTS NOT REPORTING SALARY	STUDENT'S INITIALS BELOW
2013	14	8	5	0	2	0	0	1	0	0	
2014	20	12	3	0	2	3	0	1	1	2	

3 YEAR COHORT DEFAULT RATE PUBLISHED BY USDE:	8.9%	% OF ENROLLED STUDENTS RECEIVING FEDERAL STUDENT LOANS:	82%
--	-------------	--	------------

This fact sheet is filed with the Bureau for Private Postsecondary Education. Regardless of any information you may have relating to completion rates, placement rates, starting rates, starting salaries, or license exam passage rates, this fact sheet contains the information as calculated pursuant to state Law.

Any questions a student may have regarding this fact sheet that have not been satisfactory answered by the institution may be directed to the Bureau for Private Postsecondary Education at P.O. Box 980818 West Sacramento, Ca 95798-0818, www.bppe.ca.gov, (916) 574-7720.

I certify that I have received the School Performance Fact Sheet, and information regarding completions rates, and salary or wage information included in the School Performance Fact Sheet

 Student Signature

 Date

 Print Name

SCHOOL PERFORMANCE FACT SHEET DEFINITIONS:

Calendar Year	# OF STUDENTS WHO BEGAN PROGRAM 1	STUDENTS AVAILABLE FOR GRADUATION 2	GRADUATES 3	COMPLETION RATE 4	150% GRADUATES RATE 5	150% COMPLETION RATE 6	STUDENT'S INITIALS BELOW:
---------------	--	--	--------------------	--------------------------	------------------------------	-------------------------------	---------------------------

1“NUMBER OF STUDENTS WHO BEGAN PROGRAM” IS THE NUMBER OF STUDENTS WHO BEGAN WHO ARE SCHEDULED TO COMPLETE THE PROGRAM WITHIN THE REPORTING CALENDAR YEAR.

2“STUDENTS AVAILABLE FOR GRADUATION” IS THE NUMBER OF STUDENTS WHO BEGAN THE PROGRAM MINUS THE NUMBER OF “STUDENTS UNAVAILABLE FOR GRADUATION”, WHICH MEANS STUDENTS WHO HAVE DIED, BEEN INCARCERATED, OR CALLED TO ACTIVE MILITARY DUTY.

3“GRADUATES” IS THE NUMBER OF STUDENTS WHO COMPLETED THE PROGRAM WITHIN 100% OF THE PUBLISHED LENGTH.

4“COMPLETION RATE” IS THE NUMBER OF GRADUATES DIVIDED BY THE NUMBER OF “STUDENTS AVAILABLE FOR GRADUATION”.

5“150% GRADUATES RATE” IS THE NUMBER OF STUDENTS WHO COMPLETED THE PROGRAM WITHIN 101%-150% OF THE PUBLISHED PROGRAM RATE.

6“150% COMPLETION RATE” IS THE PERCENTAGE OF STUDENTS WHO COMPLETED THE PROGRAM IN THE REPORTED CALENDAR YEAR WITHIN 101% -150% OF THE PUBLISHED LENGTH.

Calendar Year	# OF GRADUATES 7	GRADUATES AVAILABLE FOR EMPLOYMENT 8	GRADUATES EMPLOYED IN THE FIELD 9	PLACEMENT RATE 10	GRADUATES EMPLOYED LESS THAN 32 HOURS PER WEEK	GRADUATES EMPLOYED MORE THAN 32 HOURS PER WEEK	STUDENT'S INITIALS BELOW:
---------------	-------------------------	---	--	--------------------------	--	--	---------------------------

7“# OF GRADUATES” IS THE NUMBER OF STUDENTS WHO COMPLETED THE PROGRAM WITHIN 100% OF THE PUBLISHED LENGTH.

8“GRADUATES AVAILABLE FOR EMPLOYMENT” MEANS THE NUMBER OF GRADUATES MINUS THE NUMBER OF GRADUATES UNAVAILABLE FOR EMPLOYMENT. GRADUATES UNAVAILABLE FOR EMPLOYMENT MEANS GRADUATES WHO HAVE DIED, BECOME INCARCERATED, ARE CALLED TO ACTIVE MILITARY DUTY, OR ARE INTERNATIONAL STUDENTS WHO DO NOT HAVE A VISA ALLOWING EMPLOYMENT.

9“GRADUATES EMPLOYED IN THE FIELD” ARE GRADUATES WHO REPORT THAT THEY ARE EMPLOYED WITHIN SIX MONTHS OF GRADUATION IN A POSITION REQUIRING THE SKILLS THEY OBTAINED THROUGH THE EDUCATION PROVIDED BY THE SCHOOL.

10“PLACEMENT RATE” IS THE NUMBER OF EMPLOYED GRADUATES DIVIDED BY THE “GRADUATES AVAILABLE FOR EMPLOYMENT”.

Calendar Year	# OF STUDENTS TAKING THE NCLEX	# OF STUDENTS PASSING THE NCLEX	# OF STUDENTS FAILING THE NCLEX	NCLEX PASSAGE RATE	STUDENT'S INITIALS BELOW:
---------------	--------------------------------	---------------------------------	---------------------------------	--------------------	---------------------------

IN ORDER TO BECOME A LICENSED VOCATIONAL NURSE IN THE STATE OF CALIFORNIA, VOCATION NURSING GRADUATES MUST PASS THE NATIONAL COUNCIL LICENSE EXAM (NCLEX). THIS CHART SHOWS THE NUMBER OF GRADUATES WHO TOOK THE EXAM IN THE REPORTING YEAR, THE NUMBER WHO PASSED THE EXAMINATION, THE PASSAGE PERCENTAGE RATE, AND THE NUMBER WHO FAILED. YOU CAN ACCESS THE NCLEX EXAM PASS RATE INFORMATION AT http://www.bvnpt.ca.gov/education/vn_stats.shtml.

Annual Salary and Wage Reported for Graduates Employed in the Field	BELOW \$30,000	\$30,000 TO 34,999	\$35,000 TO 39,999	\$40,000 TO 44,999	\$45,000 TO 49,999	\$50,000 TO 54,999	\$55,000 TO 59,999	ABOVE \$60,000
---	----------------	--------------------	--------------------	--------------------	--------------------	--------------------	--------------------	----------------

“Annual Salary and Wage Reported for Graduates Employed in the Field” ARE THE ANNUAL SALARIES IN INCREMENTS OF \$5000.00 REPORTED BY THE GRADUATES WHO ARE EMPLOYED WITHIN SIX MONTHS OF GRADUATION IN A POSITION REQUIRING THE SKILLS THEY OBTAINED THROUGH THE EDUCATION PROVIDED BY THE SCHOOL.